

* Denotes item is Mandrel Bent



CONTENTS

<i>Warranty Details</i>	2
<i>Holden/GM 4cyl</i>	3
<i>Holden/GM 6cyl</i>	4
<i>Holden V6</i>	6
<i>Holden V8</i>	9
<i>Holden-Chev V8</i>	17
<i>Chev V8, Camaro, Impala and Truck</i>	22
<i>Ford 4cyl</i>	26
<i>Ford 6cyl</i>	27
<i>Ford V8</i>	29
<i>Chrysler 6cyl</i>	37
<i>Chrysler V8</i>	38
<i>Toyota</i>	39
<i>Nissan</i>	40
<i>BMC/Leyland Mini</i>	41
<i>International</i>	42
<i>Bedford</i>	43
<i>BMW</i>	44
<i>Block Huggers</i>	45
<i>Boat Headers</i>	53
<i>Sprint Car</i>	54
<i>Header Plates & Flanges</i>	55
<i>Collectors</i>	58
<i>Reducer Cones</i>	59
<i>Merg Collectors</i>	59
<i>Engine Mounts</i>	60
<i>V-Band Clamps</i>	63
<i>Mandrel Bends</i>	64
<i>Transmission Cross Members</i>	65
<i>Engine Conversion Kits</i>	67

***All Headers can be viewed on our Website:
www.caenterprises.com.au***

* Denotes item is Mandrel Bent



WARRANTY

The manufacturers warranty on Castle Headers products is for a period of two (2) years, covering the Headers ONLY. The warranty is subject to the following conditions

- * All claims must be made within the warranty period.*
- * Any Headers found to have faulty workmanship will be replaced free of charge.*
- * This warranty does not apply to Headers that have been subject to neglect, misuse, use, accidental or intentional damage, unauthorized repairs, modifications, incorrect application or installation.*
- * Castle Headers recommend that this product be fitted by qualified Technician.*
- * The warranty does not cover the cost of freight, installation or removal of Headers.*
- * The warranty only applies to Headers used for normal road use*

ORDERING

Orders can be placed by phone, fax or email. We prefer official purchase orders from account customers. Please quote the part number, quantity and any special requirements when ordering.

SHIPPING

All orders are dispatched upon payment (except account customers). We ship Australia-wide everyday. We can do C.O.D using Australia Post (conditions apply). If you wish to use your own courier, please advise us your account details and courier name and we can organise pick-up. All Headers can be packed in a new carton for a small cost. If you choose not to have them packed in a carton, we will not be held liable for damage during shipping.

RETURN OF GOODS

All parts returned will incur a 15% re-stocking fee. Freight is to be paid by customer unless the goods are being returned due to manufacturing defect or shipping error, in which case they are to be shipped using our Australia Post Reply Paid account. C.O.D. post will NOT be accepted under any circumstances. Goods specifically made to customers requests cannot be returned for credit. All goods remain the property of Castle Automotive Enterprises until paid for in full.

DAMAGE

All goods are shipped in good condition and are packed accordingly. We can only handle damage claims for prepaid freight.

PAYMENT

Payment can be made by credit card (Visa, Mastercard and Bankcard only), direct deposit, cheque/money order or cash over the counter. Please note that cheques and money orders must include the full amount of the order and freight costs.

* Denotes item is Mandrel Bent



Holden

4 cyl

Gemini						Part No.	CH-01
TC-TG						Gasket	
1600/1800						Jet Hot Code	JH-009
Try-Y design							
Prim. Pipe	Sec. Pipe	Outlet	Manual	Auto	Oxy Sensor		
1 5/8"	1 3/4"	2" Slip	Yes	Yes	N/A		
<ul style="list-style-type: none"> • Suit sedan, wagon and van • Will fit 1982 Holden Shuttle 							

Jackaroo & Rodeo						Part No.	CH-51
2000/2600 EFI						Gasket	
Try-Y design						Jet Hot Code	JH-009
Prim. Pipe	Sec. Pipe	Outlet	Manual	Auto	Oxy Sensor		
1 5/8"	1 3/4"	Flanged	Yes	Yes	N/A		
<ul style="list-style-type: none"> • Fits all model with EGR • Direct fitment. Bolts up to 2 bolt flange on engine pipe 							

* Denotes item is Mandrel Bent



Holden

Inline 6 cyl

Holden FX-FJ-FC-FB-FE-EK-EJ-EH-HD-HR	Part No.	CH-04*				
Torana LC-LJ-LH-LX	Gasket	HTG-110				
Red Motor Try-Y design	Jet Hot Code	JH-010				
	Prim. Pipe	Sec. Pipe	Outlet	Manual	Auto	Oxy Sensor
	1 5/8"	1 3/4"	2-1/4" Slip	Yes	Yes*	N/A

- Will not suit Hydromatic Auto - Use CH-05
- Bolt holes on inlet manifold may have to be trimmed to clear header plates

Holden HK-HT-HG-HQ-HZ-HJ-HX	Part No.	CH-05*				
Red Motor Try-Y design	Gasket	HTG-011				
	Jet Hot Code	JH-010				
	Prim. Pipe	Sec. Pipe	Outlet	Manual	Auto	Oxy Sensor
	1 5/8"	1 3/4"	2-1/4" slip	Yes	Yes	N/A

- Bolt holes on inlet manifold may have to be trimmed to clear header plates

Commodore VB	Part No.	CH-04A				
Red Motor Try-Y design	Gasket	HTG-011				
	Jet Hot Code	JH-010				
	Prim. Pipe	Sec. Pipe	Outlet	Manual	Auto	Oxy Sensor
	1 5/8"	1 3/4"	2" Slip	Yes	Yes	N/A

- Bolt holes on inlet manifold may have to be trimmed to clear header plates

Holden HK-HT-HG-HQ-HZ-HJ-HX-WB	Part No.	CH-06*				
Blue Motor Try-Y design	Gasket	EMG-169				
	Jet Hot Code	JH-010				
	Prim. Pipe	Sec. Pipe	Outlet	Manual	Auto	Oxy Sensor
	1 5/8"	1 3/4"	2" Slip	Yes	Yes	N/A

- Suit ute, van, one-tonner, Sedan & Wagon.

Holden FX-FJ-FC-FB-FE-EK-EJ-EH-HD-HR	Part No.	CH-07A*				
Torana LC-LJ-LH-LX	Gasket	EMG-169				
Blue Motor Try-Y design	Jet Hot Code	JH-010				
	Prim. Pipe	Sec. Pipe	Outlet	Manual	Auto	Oxy Sensor
	1 5/8"	1 3/4"	2 1/4" Slip	Yes	Yes	N/A

* Denotes item is Mandrel Bent



Holden

Inline 6 cyl

Commodore						Part No.	CH-07
VC-VH						Gasket	EMG-169
Blue Motor						Jet Hot Code	JH-010
Try-Y design							
Prim. Pipe	Sec. Pipe	Outlet	Manual	Auto	Oxy Sensor		
1 5/8"	1 3/4"	2" Slip	Yes	Yes	N/A		

- May have to trim corner off engine mount if fitted with Delco air conditioning

Commodore						Part No.	CH-64
VL						Gasket	EMG-107
RB30						Jet Hot Code	JH-010
Try-Y design							
Prim. Pipe	Sec. Pipe	Outlet	Manual	Auto	Oxy Sensor		
1 5/8"	1 3/4"	2 1/2" Flanged	Yes	Yes	Yes		

- Bolts on to original flange on catalytic converter

* Denotes item is Mandrel Bent



Holden

V6

Commodore						Part No.	CH-49
VN-VP-VR						Gasket	HTG-021
3.8l V6 VN-VP-VR						Jet Hot Code	JH-010
3-into-1 design						Oxy Sensor	JH-015
Prim. Pipe	Sec. Pipe	Outlet	Manual	Auto	Oxy Sensor		
1 5/8"		2" Flanged	Yes	Yes	Yes		

- Includes Y-Piece

Commodore						Part No.	CH-71
VB, VC, VH, VK, VL, VN, VP, VS Sedans, Wagons						Gasket	CAE-048G
3.8l V6 EcoTec						Jet Hot Code	JH-010
3-into-1 design						Oxy Sensor	JH-015
Prim. Pipe	Sec. Pipe	Outlet	Manual	Auto	Oxy Sensor		
1 3/4"	2"	2.5in Flanged		Yes	Yes		

- Will also fit HQ, HX, HJ, WB conversion
- Includes 'Y' piece.
- Manual Transmissions in development please inquire

Commodore						Part No.	CH-71CP
VB-VC-VH-VK							
3.8l V6 and EcoTec							

- Includes: HI-Flow Cat with 2 1/2" Flanged outlet
- Connecting pipe is 2 1/2" mandrel bent with 10mm flanges
- Connects to Redback Exhaust system. Front-M100, Rear-Sedan STR-104, Rear-Wagon STR-109

Commodore						Part No.	CH-79*
VT-VX-VU-VY						Gasket	CAE-048G
3.8l V6 EcoTec						Jet Hot Code	JH-010
3-into-1 design						Oxy Sensor	JH-015
Prim. Pipe	Sec. Pipe	Outlet	Manual	Auto	Oxy Sensor		
1 5/8"	2"	2" Flanged	Yes	Yes	Yes		

- Headers have provision for EGR

Holden						Part No.	CH-69
FC-FE-FB-EK						Gasket	HTG-021
3.8l V6 VN-VP-VR Non-EcoTec						Jet Hot Code	JH-010
Engine Conversion						Oxy Sensor	JH-015
3-into-1 design							
Prim. Pipe	Sec. Pipe	Outlet	Manual	Auto	Oxy Sensor		
1 5/8"	2"	2"	Yes	Yes	Yes		

- Includes Y-Piece with 2 1/2" Outlet
- Must be used with engine mounts CH-EM60

* Denotes item is Mandrel Bent



Holden

V6

Holden						Part No.	CH-59A
<i>EJ -EH</i>						Gasket	HTG-021
<i>3.8l V6 VN-VP-VR Non-EcoTec</i>						Jet Hot Code	JH-010
Engine Conversion	Prim. Pipe	Sec. Pipe	Outlet	Manual	Auto	Oxy Sensor	JH-015
<i>3-into-1 design</i>	1 5/8"	2"	2"	Yes	Yes	Yes	

- Includes Y-Piece with 2 1/2" Outlet
- Must be used with engine mounts CH-EM60

Holden						Part No.	CH-59
<i>HD-HR</i>						Gasket	HTG-021
<i>3.8l V6 VN-VP-VR Non-EcoTec</i>						Jet Hot Code	JH-010
Engine Conversion	Prim. Pipe	Sec. Pipe	Outlet	Manual	Auto	Oxy Sensor	JH-015
<i>3-into-1 design</i>	1 5/8"	2"	2"	Yes	Yes	Yes	

- Includes Y-Piece with 2 1/2" Outlet
- Must be used with engine mounts CH-EM60

Holden						Part No.	CH-76
<i>HQ-WB*</i>						Gasket	HTG-021
Torana						Jet Hot Code	JH-010
<i>LH-LX-UC</i>						Oxy Sensor	JH-015
Engine Conversion	Prim. Pipe	Sec. Pipe	Outlet	Manual	Auto	Oxy Sensor	
<i>3-into-1 design</i>	1 5/8"	2" Flange	2"	Yes	Yes	Yes	

- Includes Y-Piece (will not suit HQ-WB conversion)
- Must be used with engine mounts CH-EM60 or CH-EM34

Torana						Part No.	CH-81
<i>LC-LJ</i>						Gasket	HTG-021
<i>3.8l V6 VN-VP-VR Non-EcoTec</i>						Jet Hot Code	JH-010
Engine Conversion	Prim. Pipe	Sec. Pipe	Outlet	Manual	Auto	Oxy Sensor	JH-015
<i>3-into-1 design</i>	1 5/8"	2"	2"	Yes	Yes	Yes	

- Includes Y-Piece with 2 1/2" outlet
- Must be used with engine mounts CH-EM60

* Denotes item is Mandrel Bent



Holden

V6

Gemini						Part No.	CH-74
						Gasket	HTG-021
3.8l V6 VN-VP-VR Non-EcoTec						Jet Hot Code	JH-010
Engine Conversion	Prim. Pipe	Sec. Pipe	Outlet	Manual	Auto	Oxy Sensor	JH-015
3-into-1 design	1 5/8"		2"	Yes	Yes	Yes	

- Includes Y-Piece with 2 1/2" outlet
- Must be used with engine mounts CH-EM64
- Must be used with the original Bosch Starter
- May not fit with Castlemaine Rod Shop sump.

Holden						Part No.	CH-84
EJ-EH						Gasket	CAE-048G
3.8l V6 EcoTec						Jet Hot Code	JH-010
Engine Conversion	Prim. Pipe	Sec. Pipe	Outlet	Manual	Auto	Oxy Sensor	JH-015
3-into-1 design	1 5/8"	2"	2"	Yes	Yes	Yes	

- Includes Y-Piece with 2 1/2" outlet
- Must be used with engine mounts CH-EM60
- Will fit Toyota Hilux 2WD from 1987 to late 1990's
- Will fit FC-FB-EK if LHS pipe is dented 5mm to clear sub-frame
- Y-Piece will not clear VT-VY-VX Auto

Gemini						Part No.	CH-86
3.8l V6 EcoTec						Gasket	CAE-048G
Engine Conversion						Jet Hot Code	JH-010
3-into-1 design	Prim. Pipe	Sec. Pipe	Outlet	Manual	Auto	Oxy Sensor	JH-015
	1 5/8"		2" Flanged	Yes	Yes	Yes	

- Includes Y-Piece with 2 1/2" outlet

* Denotes item is Mandrel Bent



Holden

V8

Holden						Part No.	CH-08*
HQ-HJ-HZ-HX-WB & HK-HT-HG						Gasket	HTG-013
253-308 V8						Jet Hot Code	JH-003
Try-Y design							
Prim. Pipe	Sec. Pipe	Outlet	Manual	Auto	Oxy Sensor		
1 5/8"	1 3/4"	2 1/4"	Yes	Yes	N/A		

Holden						Part No.	CH-89*
HQ-HJ-HZ-HX-WB						Gasket	HTG-013
253-308 V8						Jet Hot Code	JH-003
4-into-1 design							
Prim. Pipe	Sec. Pipe	Outlet	Manual	Auto	Oxy Sensor		
1 5/8"		3" Flanged	No	Yes	N/A		
<ul style="list-style-type: none"> • Will fit with Auto Trans T-350, 400, 700R, P/Glide/TRI-Matic and All Australian 4 Speed Manual 							

Holden						Part No.	CH-89A*
HQ-HJ-HZ-HX-WB						Gasket	HTG-013
Same as CH-89 except 1 3/4" primaries							

Torana						Part No.	CH-10
LH-LX-UC						Gasket	HTG-013
253-308 V8						Jet Hot Code	JH-003
Try-Y design							
Prim. Pipe	Sec. Pipe	Outlet	Manual	Auto	Oxy Sensor		
1 5/8"	1 3/4"	2" Slip	Yes	Yes	N/A		
<ul style="list-style-type: none"> • Will fit with T-350, T-400, Trimatic and Aussie 4 speed transmissions and P/Glide 							

Torana						Part No.	CH-10 4-1*
LH-LX-UC						Gasket	HTG-013
253-308 V8						Jet Hot Code	JH-003
4-into-1 design							
Prim. Pipe	Sec. Pipe	Outlet	Manual	Auto	Oxy Sensor		
1 5/8"		2-1/2" Flanged	Yes	Yes	N/A		
<ul style="list-style-type: none"> • Will fit with hydraulic clutch • Will fit with Muncie, Toploader, T-350, T-400, Trimatic & P/Glide transmissions • Must use with Original Bosch Starter Motor • Will fit Hi-Energy and most other Winged Sumps 							

* Denotes item is Mandrel Bent



Holden

V8

Torana LC-LJ 253-308 V8 Engine Conversion Try-Y design						Part No.	CH-61*
						Gasket	HTG-013
						Jet Hot Code	JH-003
	Prim. Pipe	Sec. Pipe	Outlet	Manual	Auto	Oxy Sensor	
	1 5/8"	1 3/4"	2"	Yes	Yes	N/A	
<ul style="list-style-type: none"> • Will not suit Aussie 4 speed with hydraulic clutch on drivers side • Must be used with HQ style V8 engine mounts part no. CH-EM89 • Suits Rodeo K29 - 1988 • Secondary needs to be modified - use standard rubbers 							

Commodore VB-VC-VH-VK 253-308 V8 Try-Y design						Part No.	CH-09
						Gasket	HTG-013
						Jet Hot Code	JH-003
	Prim. Pipe	Sec. Pipe	Outlet	Manual	Auto	Oxy Sensor	
	1 5/8"	1 3/4"	2"	Yes	Yes	N/A	
<ul style="list-style-type: none"> • Suit power and non-power steering 							

Holden HQ-HJ-HZ-HX-WB & HK-HT-HG 5ltr EFI V8 Engine Conversion Try-Y design						Part No.	CH-44*
						Gasket	HTG-513
						Jet Hot Code	JH-003
	Prim. Pipe	Sec. Pipe	Outlet	Manual	Auto	Oxy Sensor	
	1 5/8"	1 3/4"	2 1/4"	Yes*	Yes*	Yes	
<ul style="list-style-type: none"> • Please specify what year engine. VS-VT engine needs 2 oxy bungs <p>Will fit with: High Energy Sump</p> <p style="padding-left: 40px;">Turbo 350, 400 and 700 Transmissions</p> <p style="padding-left: 40px;">4L60E, Holden Tri-Matic & Powerglide Transmissions</p> <p style="padding-left: 40px;">Commodore VN-VS T5 5-speed Transmissions</p> <p style="padding-left: 40px;">Toyota Supra 5 speed trans with Rod Shop bellhousing</p> <p>Must be used with V8 engine mounts Part No CH-EM89 and Rubbers to suit i.e. A1135 for HK-HT-HG & A1157A for HQ-WB</p> <ul style="list-style-type: none"> • Will fit with all Bosch Starter Motors & most Gear Reduction Starter Motors 							

* Denotes item is Mandrel Bent



Holden

V8

Holden						Part No.	CH-44A*
HQ-HJ-HZ-HX-WB						Gasket	HTG-513
5ltr EFI V8						Jet Hot Code	JH-003
Engine Conversion	Prim. Pipe	Sec. Pipe	Outlet	Manual	Auto	Oxy Sensor	
Try-Y design. Big primaries			2 1/2"				
	1 3/4"	1 7/8"	Flanged	Yes	Yes	Yes	

- Same design as CH-44. See above for fitting details
- Ideal for stroker & supercharged engines

Holden						Part No.	CH-114
HK-HT-HG						Gasket	HTG-513
5ltr EFI V8						Jet Hot Code	JH-003
Engine Conversion	Prim. Pipe	Sec. Pipe	Outlet	Manual	Auto	Oxy Sensor	
4-1 Design			3 "				
Will fit with Bosch & - Gear Reduction Starters	1 3/4"		Flanged	Yes	Yes	Yes	

- Suits Auto Trans T-350/T400/T700 4L606/Trimatic&Powerglide
- Must be used with V8 Eng Mounts P/N CH-EM 89 & A1135 Rubbers
- Will not suit Power Steering

Torana						Part No.	CH-56*
LH-LX-UC						Gasket	HTG-513
5ltr EFI V8						Jet Hot Code	JH-003
Engine Conversion	Prim. Pipe	Sec. Pipe	Outlet	Manual	Auto	Oxy Sensor	
Try-Y design.						Yes	
	1 3/4"	1 7/8"	2 1/2 "	Yes*	Yes*	LHS	

- Must use HQ Engine Mounts Part No EM-89
- Please specify what year engine. VS-VT engine needs 2 oxy bungs
- Ideal for stroker & supercharged engines

Will fit with: High Energy Sump

- Turbo 350, 400 and 700 Transmissions
- 4L60E, Holden Tri-Matic & Powerglide Transmissions
- Commodore VN-VS T5 5-speed Transmissions
- Toyota Supra 5 speed trans with Rod Shop bellhousing
- CAE-Performance Products transmission x-members

- Will not fit with early Bosch starter motor

Holden						Part No.	CH-56A*
LH-LX-UC						Gasket	HTG-013
5ltr EFI V8							
Same specs as CH-56 except 4 into 1 design							

- 1 3/4" primaries 3" collector
- Will not fit with Bosch style starter motor Use G/R-/1.9 or equivalent

* Denotes item is Mandrel Bent



Holden

V8

Torana LC-LJ 5ltr EFI V8 Engine Conversion Try-Y design.						Part No.	CH-62*
						Gasket	HTG-513
						Jet Hot Code	JH-003
	Prim. Pipe	Sec. Pipe	Outlet	Manual	Auto	Oxy Sensor	
	1 5/8"	1 3/4"	2 1/4" Flanged	Yes	Yes	Yes LHS	
<ul style="list-style-type: none"> • Please specify what year engine. VS-VT engine needs 2 oxy bungs • Must be used with HQ V8 style engine mounts P/N CH-EM89 • Steering Column will needs to be shifted with Re-Locate Plate Pt.No. STC Plate-1 • Will not fit with Mechanical Clutch and Aussie 4 Speed 							

Commodore VB-VC-VH-VK 5ltr EFI V8 Engine Conversion Try-Y design.						Part No.	CH-58*
						Gasket	HTG-513
						Jet Hot Code	JH-003
	Prim. Pipe	Sec. Pipe	Outlet	Manual	Auto	Oxy Sensor	
	1 3/4"	1 7/8"	2 1/4"	Yes	Yes	Yes LHS	
<ul style="list-style-type: none"> • Please specify what year engine. VS-VT engine needs 2 oxy bungs • Must be used with original VB-VS engine mounts. <p>Will fit with: High Energy Sump</p> <p style="padding-left: 40px;">Turbo 350, 400 and 700 Transmissions 4L60E, Holden Tri-Matic & Powerglide Transmissions Commodore VN-VS T5 5-speed Transmissions Toyota Supra 5 speed trans with Rod Shop bellhousing Commodore Getrag Transmission</p> <p>Will not fit with early Bosch starter motor</p>							

Commodore VL-VN-VP-VR-VS 5ltr EFI V8 Try-Y design.						Part No.	CH-91*
						Gasket	HTG-513
						Jet Hot Code	JH-003
	Prim. Pipe	Sec. Pipe	Outlet	Manual	Auto	Oxy Sensor	
	1 3/4"	1 7/8"	2 1/4"	Yes	Yes	Yes	
<ul style="list-style-type: none"> • Y-Piece available. Part CH-91Y • Note: If using with VL R & P Drivers side Headers must be dented on 1 & 3 Collector to clear power steering return line. • Will fit with Hi-Energy Sump <p>Note: If vehicle is fitted with knock sensor it will have to be changes to passengers side.</p>							

* Denotes item is Mandrel Bent



Holden

V8

Commodore						Part No.	CH-73*
VT-VX-VU-VY-VZ						Gasket	HTG-548
GENIII 5.7ltr &						Jet Hot Code	JH-003
LS2 6ltr V8							
Try-Y design.							
Prim. Pipe	Sec. Pipe	Outlet	Manual	Auto	Oxy Sensor		
1-3/4"	1 7/8"	2 1/2" Flanged	Yes	Yes	Yes		

- VY-VZ application must use oxy sensor extension loom part no. **LOOM-O/S-1** and **LOOM-O/S-2**

Commodore						Part No.	CH-73CP*
VT-VX-VU-VY-VZ						Gasket	HTG-548
GENIII 5.7ltr &						Jet Hot Code	JH-003
LS2 6ltr V8							
Connecting Pipe							
Prim. Pipe	Sec. Pipe	Outlet	Manual	Auto	Oxy Sensor		
2 1/2"		2 1/2"	Yes	Yes	Yes		

- Used for connecting CH-73 headers to 2 1/2" twin system. Includes 2 x hi-flow Cat converters
- To be used with Redback or factory system

* Denotes item is Mandrel Bent



Holden

V8

Commodore						Part No.	CH-94*
VT-VX-VU-VY-VZ						Gasket	HTG-548
GENIII 5.7ltr &						Jet Hot Code	JH-003
LS2 6ltr V8							
4-into-1 design							
Prim. Pipe	Sec. Pipe	Outlet	Manual	Auto	Oxy Sensor		
1 3/4"		3" Flanged	Yes	Yes	Yes		

• VY-VZ application must use oxy sensor extension loom part no. LOOM-O/S-1 and LOOM-O/S-2

Commodore						Part No.	CH-94A*
VT-VX-VU-VY-VZ						Gasket	HTG-548
GENIII 5.7ltr &						Jet Hot Code	JH-003
LS2 6ltr V8							
4-into-1 design							
Prim. Pipe	Sec. Pipe	Outlet	Manual	Auto	Oxy Sensor		
1 7/8 "		3" Flanged	Yes	Yes	Yes		

• VY-VZ application must use oxy sensor extension loom part no. LOOM-O/S-1 and LOOM-O/S-2

Commodore						Part No.	CH-94B*
VT-VX-VU-VY-VZ						Gasket	HTG-548
GENIII 5.7ltr &						Jet Hot Code	JH-003
LS2 6ltr V8							
and LS-3							
4-into-1 design							
Prim. Pipe	Sec. Pipe	Outlet	Manual	Auto	Oxy Sensor		
2"		3" or 3 1/2" Flanged	Yes	Yes	Yes		

• VY-VZ application must use oxy sensor extension loom part no. LOOM-O/S-1 and LOOM-O/S-2

• available in 3in. Or 3 1/2in. 2-bolt Flanged Outlet

Commodore						Part No.	CH-94CP*
VT-VX-VU-VY-VZ							
GENIII 5.7ltr &							
LS2 6ltr V8							
Connecting Pipe							
Prim. Pipe	Sec. Pipe	Outlet	Manual	Auto	Oxy Sensor		
2 1/2"		2 1/2"	Yes	Yes	N/A		

• Used for connecting CH-94 headers to 2 1/2" twin system. Includes 2 x hi-flow Cat converters

• Must be used with Redback part no's STR130 & STR132

* Denotes item is Mandrel Bent



Holden

V8

Commodore						Part No.	CH-100*
VE-VF						Gasket	HTG-548
LS2 6ltr V8						Jet Hot Code	JH-003
4-into-1 design							
Prim. Pipe	Sec. Pipe	Outlet	Manual	Auto	Oxy Sensor		
1 3/4"		3" Flanged	Yes	Yes	Yes		

• Must be used with Euro 3 compliance cat converters

Commodore						Part No.	CH-100A*
VE-VF						Gasket	HTG-548
LS2 6ltr V8						Jet Hot Code	JH-003
4-into-1 design							
Prim. Pipe	Sec. Pipe	Outlet	Manual	Auto	Oxy Sensor		
1 7/8"		3" Flanged	Yes	Yes	Yes		

• Must be used with Euro 3 compliance cat converters

Commodore						Part No.	CH-100CP*
VE-VF							
LS2 6ltr V8							
Connecting Pipe							
Prim. Pipe	Sec. Pipe	Outlet	Manual	Auto	Oxy Sensor		
1 7/8"		2 1/2"	Yes	Yes	Yes		

• Used for connecting CH-100 headers to 2 1/2" twin system. Includes 2 x hi-flow Cat converters
 • Must be used with Castle Headers rear section (CH-100M/SED or CH-100M/UTE) or Factory System.

Holden						Part No.	CH-87*
HK-HT-HG						Gasket	HTG-548
Fitted with LS-1, 2, 3 & 4 V8 Engines						Jet Hot Code	JH-003
GENIII 5.7lt,							
LS-2 6ltr, LS-3 & 6.2							
Engine Conversion							
4-into-1 design							
Prim. Pipe	Sec. Pipe	Outlet	Manual	Auto	Oxy Sensor		
1 3/4"		3" Flanged	Yes	Yes	Yes		

• Will only fit with Rack & Pinion steering
 • Must be used with engine mounts CH-EM69
 • Also available in 2 " primaries with 3 1/2" collector
 • Also available in 1 7/8 " primaries with 3" collector

Holden							CH-87A
HK-HT-HG							CH-87B
• Will fit Factory Steering Box							CH-87C
• Must be used with Engine Mounts CH-EM69							

* Denotes item is Mandrel Bent



Holden V8

Holden HQ-HJ-HZ-HX-WB GENIII 5.7ltr & LS2 6ltr V8 & LS3 Engine Conversion Try-Y design	Part No.	CH-78*				
	Gasket	HTG-548				
	Jet Hot Code	JH-003				
	Prim. Pipe	Sec. Pipe	Outlet	Manual	Auto	Oxy Sensor
	1 3/4"	1 7/8"	2 1/2" Flanged	Yes	Yes	Yes

- Must be used with engine mounts CH-EM69
- Will also fit Chev Impala 1965-70- if drivers side primaries are modified.

Holden HQ-HJ-HZ-HX-WB GENIII 5.7ltr & LS2 6ltr V8 & LS3 Engine Conversion 4-into-1 design	Part No.	CH-95*				
	Gasket	HTG-548				
	Jet Hot Code	JH-003				
	Prim. Pipe	Sec. Pipe	Outlet	Manual	Auto	Oxy Sensor
	1 3/4"		3" Flanged	Yes	Yes*	Yes

- Must be used with engine mounts CH-EM69
- Will also suit T400 - T350 and Powerglide transmission
- Must use Oxy Sensors Extensions P/N Loom O/S-1.
- Will also fit with Blacks Rack & Pinion Steering.
- LS2 & LS3 Engines use Loom o/s-2
- Requires Trans X-Member to suit your Transmission

Holden HQ-HJ-HZ-HX-WB GENIII 5.7ltr & LS2 6ltr V8 & LS3 Engine Conversion 4-into-1. Big primaries	Part No.	CH-95A*				
	Gasket	HTG-548				
	Jet Hot Code	JH-003				
	Prim. Pipe	Sec. Pipe	Outlet	Manual	Auto	Oxy Sensor
	1 7/8"		3 1/2" Flanged	Yes	Yes*	Yes

- Must be used with engine mounts CH-EM69
- Will also suit T400 - T350 and Powerglide transmission
- Ideal for supercharged engines
- Must use Oxy Sensors Extensions P/N Loom O/S-1.
- Will also fit with Blacks Rack & Pinion Steering.
- LS2 & LS3 Engines use Loom o/s-2
- Requires Trans X-Member to suit your Transmission

Torana LH-LX-UC GENIII 5.7ltr & LS2 6ltr V8 & LS3 Engine Conversion Try-Y design	Part No.	CH-77*				
	Gasket	HTG-548				
	Jet Hot Code	JH-003				
	Prim. Pipe	Sec. Pipe	Outlet	Manual	Auto	Oxy Sensor
	1 3/4"	2"	2 1/2" Flanged	Yes	Yes	Yes

- Must be used with engine mounts CH-EM70
- Will fit with factory LS small starter or HI-TORQUE G/R-01/LS-1-2-3
- Will not fit with Castlemaine Rod Shop Engine Mount Conversion Kit.

* Denotes item is Mandrel Bent



Holden

V8

Torana LH-LX-UC GENIII 5.7ltr & LS2 6ltr V8 & LS3 Engine Conversion 4-into-1 design						Part No.	CH-77A*
						Gasket	HTG-548
						Jet Hot Code	JH-003
	Prim. Pipe	Sec. Pipe	Outlet	Manual	Auto	Oxy Sensor	
1 3/4"	n/a	2 1/2" Flanged	Yes	Yes	Yes		

- Must be used with engine mounts CH-EM70
- Will fit with factory LS small starter or HI-TORQUE G/R-01/LS-1-2-3
- Will not fit with Castlemaine Rod Shop Engine Mount Conversion Kit.

Torana LC-LJ GENIII 5.7ltr & LS2 6ltr V8 & LS3 Engine Conversion Try-Y design						Part No.	CH-93
						Gasket	HTG-548
						Jet Hot Code	JH-003
	Prim. Pipe	Sec. Pipe	Outlet	Manual	Auto	Oxy Sensor	
1 3/4"	1 7/8"	2 1/2" Flanged	Yes	Yes	Yes		

- Must be used with engine mounts CH-EM70
- Must be used with gear reduction starter G/R-01/GENIIITOR

Commodore VB-VC-VH-VK-VL-VN-VP-VR-VS GENIII 5.7ltr & LS2 6ltr V8 & LS3 Engine Conversion Try-Y design						Part No.	CH-80*
						Gasket	HTG-548
						Jet Hot Code	JH-003
	Prim. Pipe	Sec. Pipe	Outlet	Manual	Auto	Oxy Sensor	
1 3/4"	2 "	2 1/2" Flanged	Yes	Yes	Yes		

Read Note 1 on Page 17

- Must be used with Engine Mountings Part No CH-EM80A or CH-EM80P/M
- Will fit with power and non-power steering including Variable Ration Power steering in VN-VP-VR
- Must be used with L.H.Side Starter Motor Conversion.

Commodore VB-VC-VH-VK-VL-VN-VP-VR-VS GENIII 5.7ltr & LS2 6ltr V8 Engine Conversion 4-into-1 design						Part No.	CH-80A*
						Gasket	HTG-548
						Jet Hot Code	JH-003
	Prim. Pipe	Sec. Pipe	Outlet	Manual	Auto	Oxy Sensor	
1 7/8"		3" 2 Bolt Flange	Yes	Yes	Yes		

Read Note 1 on Page 17

- Must be used with Engine Mountings Part No CH-EM80A. or CH-EM80P/M
- Will fit with power and non-power steering including Variable Ration Power steering in VN-VP-VR
- Must be used with L.H.Side Starter Motor Conversion kit.

* Denotes item is Mandrel Bent



Holden

V8

Commodore						Part No.	CH-80B*
VB-VC-VH-VK-VL-VN-VP-VR-VS						Gasket	HTG-548
GENIII 5.7ltr & LS2 6ltr V8						Jet Hot Code	JH-003
Engine Conversion 4-into-1 design						Prim. Pipe	Sec. Pipe
						Outlet	Manual
						Auto	Oxy Sensor
						1 3/4"	2 BoltFlange
						3"	Yes
						Yes	Yes
						Yes	Yes

Read Note 1 on Page 17

- Must be used with Engine Mountings Part No CH-EM80A. Or CH-EM80P/M
- Will fit with power and non-power steering including Variable Ration Power steering in VN-VP-VR
- Must be used with L.H.Side Starter Motor Conversion kit.

Holden						Part No.	CH-97*
HQ-HJ-HZ-HX-WB						Gasket	HTG-513
5.0 Ltr EFI V8						Jet Hot Code	JH-003
Engine Conversion 4-1 Tuned Length Design						Prim. Pipe	Sec. Pipe
						Outlet	Manual
						Auto	Oxy Sensor
						1-3/4"	3 "
						Flanged	Yes
						Yes	Yes
						Yes	Yes

- Please Specify what year Engine as VS-VT Engine needs
two (2) Oxy Bungs
- Must use with HQ Style V8 Engine mounts Part No CH-EM89
- Will fit with Bosch Starter Motors & most Gear Reduction Starter Motors
BXH - 136 or G/R-03/1.9 Hi-Torque.
- Will fit with - HI-Energy Sump, T-350, 400and 700 Transmissions. 4L60,
Trimatic, Powerglide & Getrag Transmissio VN-VS T5-5Speed.
Toyota Supra 5 Speed Trans with Rod Shop Bell housing.

Holden						Part No.	CH-97A*
HQ-HJ-HZ-HX-WB						Gasket	HTG-513
5.0 Ltr EFI V8						Jet Hot Code	JH-003
Engine Conversion 4-1 Tuned Length Design						Prim. Pipe	Sec. Pipe
						Outlet	Manual
						Auto	Oxy Sensor
						1 7/8 "	3 1/2 "
						Flanged	Yes
						Yes	Yes
						Yes	Yes

Same as CH-97, but with 1 7/8 " Primaries.

NOTE 1:
For easier fitment and better clearances on Power Rack and Pinion Steering we Highly Recommend to fit VN-VS Commodore K-Frame and all Steering Components.

This will give you better clearance around the Rack and Pinion, Body and Steering Shaft.

* Denotes item is Mandrel Bent



Holden - Chev

V8

Holden						Part No.	CH-60*
HK-HT-HG						Gasket	HTG-548
Small Block Chev						Jet Hot Code	JH-003
Try-Y design.							
	Prim. Pipe	Sec. Pipe	Outlet	Manual	Auto	Oxy Sensor	
Suits Original Steering	1 5/8"	1 3/4"	2 1/4"	Yes	Yes	N/A	
Will fit with CAE	• If using with T400 trans, suggest using XB Falcon or CAE cross member						
Front Power Steering	• Will Fit with CAE Power Steering R&P						
	• Must use with engine mounts CH-EM31						
	• Will fit with Straight and Angle Plug Heads.						
	• Column Shift						

Holden						Part No.	CH-116*
HK-HT-HG						Gasket	HTG-548
Small Block Chev						Jet Hot Code	JH-003
4-into-1 design.							
	Prim. Pipe	Sec. Pipe	Outlet	Manual	Auto	Oxy Sensor	
Suits Original Steering	1 3/4"		3" Flanged	Yes	Yes	N/A	
	• Suits Factory Heater Box						
	• Will fit with Straight and Angle Plug Heads.						
	• Will fit with T350, T400, Muncie, Toploader, Saginaw Man (with LHS Slave Cyl only) and Powerglide						
	Same as CH-116 but has 1-7/8" Primaries 3 1/2" Collector reduced to 3" with 3 Bolt Flange.						
	• Will not fit Powerglide transmissions unless collector on L.H.S. is modified.						
	• Will not suit aftermarket starter motors.						
	• Advise to use Castle headers Trans X/Member						
	• Will fit with CAE front Power Steering Rack & Pinion CH-116A only						

CH-116A*

Holden						Part No.	CH-11*
HQ-HJ-HX-HZ-WB						Gasket	HTG-548
Small Block Chev						Jet Hot Code	JH-003
Engine Conversion							
Try-Y design.							
	Prim. Pipe	Sec. Pipe	Outlet	Manual	Auto	Oxy Sensor	
	1 5/8"	1 3/4"	2"	Yes	Yes	N/A	
	• Will fit with Straight and Angle Plug Heads.						
	• Will not fit with Harrison A/C						

* Denotes item is Mandrel Bent



Holden - Chev

V8

Holden HQ-HJ-HX-HZ-WB Small Block Chev	Part No.	CH-28*
	Gasket	HTG-548
	Jet Hot Code	JH-003

Engine Conversion	Prim. Pipe	Sec. Pipe	Outlet	Manual	Auto	Oxy Sensor
4-into-1 design	1 3/4 "		3" Flanged	Yes	Yes	N/A

- Will fit with Straight and Angle Plug Heads.
- Will fit with T350, T400, Muncie, Toploader, Powerglide and T56 Tremec transmissions
- Will fit with T-56 Tremec manual transmissions
- Will not fit harrison A/C
- Will not fit with all Aust. 4 speed with mechanical clutch.

Same as Ch-28 but has 1-7/8 " Primaries, 3-1/2 " Collector & 3 Bolt Flg P/N -- CH-28A* **CH-28A***

Holden Torana - Chev

V8

Torana LH-LX-UC Small Block Chev	Part No.	CH-12*
	Gasket	HTG-548
	Jet Hot Code	JH-003

Engine Conversion	Prim. Pipe	Sec. Pipe	Outlet	Manual	Auto	Oxy Sensor
Try-Y design	1 3/4 "	1 7/8 "	2 1/2 " Flanged	Yes	Yes	N/A

- Will fit with Straight and Angle Plug Heads.
- Must be use with HQ Chev engine mounts CH-EM02
- Suits Auto Trans T-400, T-350, Powerglide & most Manual Transmissions
- Must be used with Gear reduction starter motor G/R-01/1.9
- Will fit with Tremec 5 speed if bell housing is trimmed.
- Suits HI Energy Sump

Torana & Camaro R.H.D LC-LJ & 1967-78 Camaro Small Block Chev	Part No.	CH-31*
	Gasket	HTG-548
	Jet Hot Code	JH-003

Engine Conversion	Prim. Pipe	Sec. Pipe	Outlet	Manual	Auto	Oxy Sensor
Try-Y design	1 5/8"	1 3/4"	2 1/4"	Yes	Yes	N/A

- Must be use with HK-HT-HG engine mounts CH-EM31
- Will fit with Straight and Angle Plug Heads.
- Must be used with Gear Reduction starter motor G/R-01/1.9
- Steering column must be moved 22mm towards drivers side - use STC Plate-1
- Also suits 1967-78 Camaro with factory Chev Steering Box R.H.D. only

* Denotes item is Mandrel Bent



Holden - Chev

V8

Holden						Part No.	CH-57*
HK-HT-HG						Gasket	CAE-011G
Big Block Chev						Jet Hot Code	JH-003
Engine Conversion							
4-into-1 design							
Prim. Pipe	Sec. Pipe	Outlet	Manual	Auto	Oxy Sensor		
2"		3 1/2" Flanged	Yes	Yes	N/A		

- Must be used with engine mounts CH-EM31
- Recommend to use with Gear Reduction starter motor
- Only suits Original Steering Box
- Will fit with Factory Heater Box
- Will not fit with Tall Deck Engines.

Holden						Part No.	CH-14*
HQ-HJ-HX-HZ-WB						Gasket	CAE-011G
Big Block Chev						Jet Hot Code	JH-003
Engine Conversion							
4-into-1 design							
Prim. Pipe	Sec. Pipe	Outlet	Manual	Auto	Oxy Sensor		
2"		3 1/2" Flanged	Yes	Yes	N/A		

- Will not suit Patriot Heads Part No 2214
- Must be used with HQ Chev engine mounts CH-EM02
- Can be used with factory starter or gear reduction unit
- Due to variations in transmission combinations, transmission may have to be spaced for correct fitment of headers. Will fit with High-Energy Sump.
- Suggest using CAE transmission X-member
- Use with Oil Filter Ryco Z40 or GEN 5 and 6 Block best suit K&N PS-2002 Short Filter

Holden						Part No.	CH-14A*
HQ-HJ-HX-HZ-WB						Gasket	CAE-011G
Big Block Chev						Jet Hot Code	JH-003
Tall Deck 572 Eng							
4-into-1 design							
All Specs same as CH-14							
Prim. Pipe	Sec. Pipe	Outlet	Manual	Auto	Oxy Sensor		
2"		3 1/2" Flanged	Yes	Yes	N/A		

* Denotes item is Mandrel Bent



Chevrolet

V8

Chev 1955-56-57 Small Block 4-into-1 design						Part No.	CH-36*
						Gasket	HTG-548
						Jet Hot Code	JH-003
	Prim. Pipe	Sec. Pipe	Outlet	Manual	Auto	Oxy Sensor	
1 5/8"		3" Flanged	Yes	Yes	N/A		

- Will fit angle and straight plug heads
- Will fit with standard steering and most power steering boxes
- Will fit with original cradle engine mounts
- Must be use with engine mounts CH-EM36-S/B
- Will not suit R & P Steering.
- Will not fit with original Trans Side Mounts unless modified

Chev 1955-56-57 Small Block 4-into-1 design						Part No.	CH-36B*
						Gasket	HTG-548
						Jet Hot Code	JH-003
	Prim. Pipe	Sec. Pipe	Outlet	Manual	Auto	Oxy Sensor	
1 3/4"		3" Flanged	Yes	Yes	N/A		

- Same design as CH-36 but with big primaries. See above for fitting details
- Must be use with engine mounts CH-EM36-S/B
- Designed to suit Left Hand Drive vehicles
- Will not fit with factory transmission mounts or 2 speed cast iron trans
- Will fit Angle and Straight Plug Heads

Chev 1955-56-57 Small Block 4-into-1 design						Part No.	CH-36A*
						Gasket	HTG-548
						Jet Hot Code	JH-003
	Prim. Pipe	Sec. Pipe	Outlet	Manual	Auto	Oxy Sensor	
1 5/8"		3" Flanged	Yes	Yes	N/A		

- Designed to suit Rod Shop, AOD, and Flamin River **Rack and Pinion Steering**
- Will fit angle plug heads
- Must be use with engine mounts CH-EM36-S/B
- R.H.D. only

* Denotes item is Mandrel Bent



Chevrolet

V8

Chev Convertible 1955-56-57 Small Block 4-into-1 design	Part No.	CH-36C*
	Gasket	HTG-548
	Jet Hot Code	JH-003

Prim. Pipe	Sec. Pipe	Outlet	Manual	Auto	Oxy Sensor
1-5/8"		3" Flange	Yes	Yes	N/A

- Designed to suit Right and Left hand drive
- Will fit angle Plug Heads.
- Will suit most Power Steering boxes
- Also available in 1 3/4" Primaries on request

Impala & Pontiac R.H.D and L.H.D. 1958-64 Small Block 4 into 1 Ideal for HOT ROD Applications	Part No.	CH-121
	Gasket	HTG-548
	Jet Hot Code	JH-003

Prim. Pipe	Sec. Pipe	Outlet	Manual	Auto	Oxy Sensor
1 3/4"		3" Flanged	Yes	Yes	N/A

- Suit Manual & Column Auto
- Suit X-style chassis
- Will fit with 11" & 10 1/2" flywheel/ring gear
- Must use Z40 Oil Filter
- Will fit angle and straight plug heads

Impala & Pontiac R.H.D Only 1965-68 Small Block Try-Y design	Part No.	CH-55*
	Gasket	HTG-548
	Jet Hot Code	JH-003

Prim. Pipe	Sec. Pipe	Outlet	Manual	Auto	Oxy Sensor
1 5/8"	1 7/8"	2"	Yes	Yes	N/A

- Suit Manual & Column Auto
- Suit H-style chassis
- Will fit with 11" & 10 1/2" flywheel/ring gear
- Suits angle and straight plug heads

Truck C10-C20-C30 Small Block Try-Y design	Part No.	CH-88*
	Gasket	HTG-548
	Jet Hot Code	JH-003

Prim. Pipe	Sec. Pipe	Outlet	Manual	Auto	Oxy Sensor
1 5/8"	1 3/4"	2 1/4"	Yes	Yes	N/A

- Will not fit 1974-80 models
- Will not fit 4WD
- Will not fit C1500 as chassis is different

* Denotes item is Mandrel Bent



Chevrolet

Chev	Part No.	CH-106SS*				
	Gasket	HTG-548				
<i>Small Block</i> 4-into-1 design	Prim. Pipe	Sec. Pipe	Outlet	Manual	Auto	Oxy Sensor
	1 3/4"		3" Flanged	N/A	N/A	N/A

- Polished Stainless Steel
- Universal fit headers.

Chev 1955-56-57 <i>Big Block</i> Engine Conversion 4-into-1 design	R.H.D Only					Part No.	CH-37*
						Gasket	CAE-011G
						Jet Hot Code	JH-003
	Prim. Pipe	Sec. Pipe	Outlet	Manual	Auto	Oxy Sensor	
	2"		3 1/2" Flanged	Yes	Yes	N/A	

- Will fit most power steering conversions
- Will fit with standard steering box and HK-T-G steering box conversion
- Will fit with HX-HJ Holden front graft
- Must be used with engine mounts CH-EM36-B/B

Chev 1955-56-57 <i>Big Block</i> Engine Conversion 4-into-1 design	R.H.D Only					Part No.	CH-37R&P*
						Gasket	CAE-011G
						Jet Hot Code	JH-003
	Prim. Pipe	Sec. Pipe	Outlet	Manual	Auto	Oxy Sensor	
	2"		3 1/2" Flanged	Yes	Yes	N/A	

- Designed to fit Rod Shop, AOD, & Flamin River Rack & Pinion Steering
- Must be used with engine mounts CH-EM36-B/B

Impala and Bela R.H.D Only 1965-70 <i>Big Block</i> Engine Conversion 4-into-1 design						Part No.	CH-37A*
						Gasket	CAE-011G
						Jet Hot Code	JH-003
	Prim. Pipe	Sec. Pipe	Outlet	Manual	Auto	Oxy Sensor	
	2"		3 1/2" Flanged	Yes	Yes	N/A	

- Must be used with engine mounts CH-EM36-B/B

* Denotes item is Mandrel Bent



Chevrolet

Truck C10-C20-C30 Big Block Try-Y design	Part No.	CH-63
	Gasket	CAE-011G
	Jet Hot Code	JH-003

Prim. Pipe	Sec. Pipe	Outlet	Manual	Auto	Oxy Sensor
2"	2 1/4"	2 1/2"	Yes	Yes	N/A

- Also fit GMC truck
- R.H.Drive Only
- Will not fit C1500 as Cahssis is different

Chev 1955-56-57 GENIII 5.7ltr & LS2 6ltr V8 Engine Conversion 4-into-1 design	Part No.	CH-83*
	Gasket	HTG-548
	Jet Hot Code	JH-003

Prim. Pipe	Sec. Pipe	Outlet	Manual	Auto	Oxy Sensor
1 3/4"		3" Flanged	Yes	Yes	Yes

- R.H.Drive Only
- Suits Power Steering Box and Standard Steering Box

Camaro 1967-68-69 Big Block Engine Conversion 4-into-1 design	Part No.	CH-67*RHD
		CH-67*LHD
	Gasket	CAE-011G
	Jet Hot Code	JH-003

Prim. Pipe	Sec. Pipe	Outlet	Manual	Auto	Oxy Sensor
	2"	3 1/2"	Flanged	Yes	Yes

- Will fit wit XF Ford, Toyota Crown and HQ Steering boxes.
- Engine must be mounted in centre. Drivers side will not fit if mounted towards the RHS

* Denotes item is Mandrel Bent



Ford

4cyl

Escort	Part No.	CH-32
<i>MKII</i>	Gasket	
2.0ltr inline 4	Jet Hot Code	
<i>4-into-1 design</i>		

Prim. Pipe	Sec. Pipe	Outlet	Manual	Auto	Oxy Sensor
1 1/2"	2"	2"	Yes	Yes	N/A

- Exits on RHS of engine

Escort	Part No.	CH-33A
<i>MKII</i>	Gasket	
2.0ltr inline 4	Jet Hot Code	JH-009
<i>Try-Y design</i>		

Prim. Pipe	Sec. Pipe	Outlet	Manual	Auto	Oxy Sensor
1 1/2"	1 3/4"	2"	Yes	Yes	N/A

- Exits on RHS of engine
- Suits overhead cam engine

Cortina	Part No.	CH-33
<i>MKI & MKII</i>	Gasket	
1.6ltr inline 4	Jet Hot Code	JH-009
<i>Try-Y design</i>		

Prim. Pipe	Sec. Pipe	Outlet	Manual	Auto	Oxy Sensor
1 1/2"	1 3/4"	2"	Yes	Yes	N/A

- Exits on LHS of engine
- Will fit MKII Cortina 1600. Cross flow 1968-1971
- Will fit MKI Cortina with fitted with 1600. Cross flow 1963-1967
- Will NOT fit 1967 MKII 1500 pre-cross flow.
- Will NOT fit MK1 with 1200, 1500 cross flow engines.
- Will NOT fit 1600 cross flow when fitted in Escort.

* Denotes item is Mandrel Bent



Ford

6cyl

Falcon XP-XM-XL-XK 170-221ci 6cyl Try-Y design						Part No.	CH-15
						Gasket	
						Jet Hot Code	JH-010
Prim. Pipe	Sec. Pipe	Outlet	Manual	Auto	Oxy Sensor		
1 1/2"	1 3/4"	2"	Yes	Yes	N/A		

- Suit low deck engine

Falcon XR-XT-XW-XY-XA-XB 200-250ci 6cyl Try-Y design						Part No.	CH-16
						Gasket	EMG-040
						Jet Hot Code	JH-010
Prim. Pipe	Sec. Pipe	Outlet	Manual	Auto	Oxy Sensor		
1 1/2"	1 3/4"	2"	Yes	Yes	N/A		

Falcon XC-XD-XE-XF 250 ci 6cyl Try-Y design						Part No.	CH-17*
						Gasket	EMG-004
						Jet Hot Code	JH-010
Prim. Pipe	Sec. Pipe	Outlet	Manual	Auto	Oxy Sensor		
1-5/8"	1 3/4"	2-1/4"	Yes	Yes	N/A		

- Suit cross flow alloy head engines
- Will not fit EFI engines (use CH-42)

Falcon XF 6cyl EFI engine Try-Y design						Part No.	CH-42
						Gasket	EMG-165
						Jet Hot Code	JH-010
Prim. Pipe	Sec. Pipe	Outlet	Manual	Auto	Oxy Sensor		
1 1/2"	1 3/4"	2" Flanged	Yes	Yes	N/A		

- Suit EFI & carby engines with Cat converter

Falcon & Fairlane EA-EB-ED-EF-EL-AU & XH Ute Fairlane NA-NB-NC-ND 3.9ltr & 4.0ltr Try-Y design						Part No.	CH-72*
						Gasket	HTG-042
						Jet Hot Code	JH-010
Prim. Pipe	Sec. Pipe	Outlet	Manual	Auto	Oxy Sensor		
1 5/8"	1 3/4"	2 1/2" Flanged	Yes	Yes	Yes		

- Cat needs to be shifted back underneath floorpan
- Will fit Manual & Column auto

* Denotes item is Mandrel Bent



Ford

6cyl

Falcon & Fairlane						Part No.	CH-72CP
<i>Connecting Pipe includes Hi Flow Cat Converter suits CH-72 Header</i>							HTG-042
Prim. Pipe	Sec. Pipe	Outlet	Manual	Auto	Oxy Sensor		
2 1/2 "		2 1/2"					
Flanged		Flanged	Yes	Yes	N/A		

Falcon BA-BF-FG 4.0 Ltr 6Cyl						Part No.	CH-82CP
<i>Connecting Pipe includes Hi Flow Cat Converter suits CH-82 Header</i>							HTG-559
Prim. Pipe	Sec. Pipe	Outlet	Manual	Auto	Oxy Sensor		
2 1/2 "		2 1/2"					
Flanged		Flanged	Yes	Yes	Yes		

• Will connect to Original or Aftermarket systems

Connecting Pipe includes Hi Flow Cat Converter suits CH-82 Header

CH-82CP-BA
CH-82CP-BF-BG

Connecting Pipe includes Hi Flow Cat Converter suits CH-82 Header

Falcon+ Territory AWD & RWD						Part No.	CH-82*
<i>BA - BF - FG</i>						Gasket	HTG-559
<i>4.0ltr 6cyl</i>						Jet Hot Code	JH-010
<i>Try-Y design</i>							
Prim. Pipe	Sec. Pipe	Outlet	Manual	Auto	Oxy Sensor		
1 5/8"	1 3/4"	2 1/2" Flanged	Yes	Yes	Yes		

• Cat needs to be shifted back underneath floorpan

Cortina						Part No.	CH-18
<i>TC-TD</i>						Gasket	EMG-004
<i>200-250ci</i>						Jet Hot Code	JH-010
<i>Try-Y design</i>							
Prim. Pipe	Sec. Pipe	Outlet	Manual	Auto	Oxy Sensor		
1 1/2"	1 3/4"	2"	Yes	Yes	Yes		

Cortina						Part No.	CH-19
<i>TE-TF and Ford Truck F100-F150-F250-F350</i>						Gasket	EMG-165
<i>6cyl - X Flow Engines</i>						Jet Hot Code	JH-010
<i>Try-Y design</i>							
Prim. Pipe	Sec. Pipe	Outlet	Manual	Auto	Oxy Sensor		
1 1/2"	1 3/4"	2"	Yes	Yes	Yes		

• Suit cross-flow, cast iron and alloy head engines

• Duel plate bolt pattern

* Denotes item is Mandrel Bent



Ford Mustang

V8

Mustang 1964-70 289-302 Windsor 4-into-1 design						Part No.	CH-96*
						Gasket	CAE-016G
						Jet Hot Code	JH-003
	Prim. Pipe	Sec. Pipe	Outlet	Manual	Auto	Oxy Sensor	
	1 5/8"		3" Flanged	Yes	Yes	N/A	

- Suits LHD and RHD with original steering box.
- Will not suit LHD with Mechanical, or Ram assisted Power steering
- Will not suit GT40 heads, EA to AU engines (due to spark plug angle & Starter Motor on LHS)
- For 351 Windsor application, collectors will have to be cut and pointed outwards to clear the transmission.
- Will also suit RRS Rack and Pinion Conversion. RH Drive only
- Read note 1 on page 30

Mustang 1964-70 289-302 Windsor Tri-Y Design						Part No.	CH-120*
						Gasket	CAE-016G
						Jet Hot Code	JH-003
	Prim. Pipe	Sec. Pipe	Outlet	Manual	Auto	Oxy Sensor	
	1 5/8"	1 7/8"	2 1/4" Flanged	Yes	Yes	N/A	

- Will fit with XD-XE Power Steering box RHD
- Suits C4 Auto only
- Will suit AOD late transmission with Overdrive
- Will not suit GT40 heads, EA to AU engines (due to spark plug angle & Starter Motor on LHS)
- Top Loader Trans may need modifications to clear slave cylinder
- Read note 1 on page 30

* Denotes item is Mandrel Bent



Ford Cortina Capri Conversions

V8

Cortina TC-TD 289-302 Windsor Engine Conversion Try-Y design							Part No.	CH-66
							Gasket	CAE-016G
							Jet Hot Code	JH-003
	Prim. Pipe	Sec. Pipe	Outlet	Manual	Auto	Oxy Sensor		
	1 5/8"	1 3/4"	2"	Yes	Yes	N/A		
<ul style="list-style-type: none"> • Will not suit with starter motor on LHS • Read note 1 on page 30 								

Cortina TE-TF 289-302 Windsor Engine Conversion 4-into-1 design							Part No.	CH-25
							Gasket	CAE-016G
							Jet Hot Code	JH-003
	Prim. Pipe	Sec. Pipe	Outlet	Manual	Auto	Oxy Sensor		
	1 5/8"		2"	Yes	Yes	N/A		
<ul style="list-style-type: none"> • Must be used with gear reduction starter motor (G/R-02/A or M) • These headers were originally designed to suit the CRS conversion. We suggest that they be trial fitted as we have been advised that there is verations. • Read note 1 on page 30 								

Capri & MK3 Zephyr- 1962 289-302 Windsor Engine Conversion Try-Y design							Part No.	CH-46
							Gasket	CAE-016G
							Jet Hot Code	JH-003
	Prim. Pipe	Sec. Pipe	Outlet	Manual	Auto	Oxy Sensor		
	1 5/8"	1 3/4"	2"	Yes	Yes	N/A		
<ul style="list-style-type: none"> • Must be used with gear reduction starter motor (G/R-02/A or M) • Will fit with Rod Shop conversion • Suits GT40 and AU Series3 GT40TP Heads • Read note 1 on page 30 								

Cortina TC-TD 302-351 Cleveland Engine Conversion Try-Y design							Part No.	CH-68
							Gasket	HTG-002
							Jet Hot Code	JH-003
	Prim. Pipe	Sec. Pipe	Outlet	Manual	Auto	Oxy Sensor		
	1 3/4"	1 7/8"	2 1/4"	Yes	Yes	N/A		
<ul style="list-style-type: none"> • Must be used with gear reduction starter motor (G/R-02/A or M) 								

NOTE 1	<ul style="list-style-type: none"> • If Customer is using Aftermarket Heads eg-Edelbrock or Patriot ETC. Check the spark plug angle is the same as original O.E.M cast iron heads.
---------------	---

* Denotes item is Mandrel Bent



Ford

V8

Falcon XP-XM 289-302 Windsor Engine Conversion Try-Y design RH Starter Motor Only							Part No.	CH-65*
							Gasket	CAE-016G
							Jet Hot Code	JH-003
	Prim. Pipe	Sec. Pipe	Outlet	Manual	Auto	Oxy Sensor		
		2 Bolt Flanges						
	1 5/8"	1 3/4"	2 1/4"	Yes	Yes	N/A		

- Will fit with Rod Shop, Seelenmeyer and other available conversion kits.
- Column auto linkage needs to be modified
- Will not fit with GT40 heads or GT40TP heads
- Will fit with RRS Suspension.
- Read note 1 on page 30

Falcon XP-XM - Fitted with EA-AU E.F.I Windsor V8 Engine (LH or RH Starter) 289-302 Windsor Engine Conversion Try-Y design LH or RH Starter Motor							Part No.	CH-65A*
							Gasket	CAE-016G
							Jet Hot Code	JH-003
	Prim. Pipe	Sec. Pipe	Outlet	Manual	Auto	Oxy Sensor		
		2 Bolt flanges				x 2		
	1 5/8"	1 3/4"	2 1/4"	Yes	Yes	Yes		

- Will fit with Rod Shop, Seelenmeyer and other available conversion kits.
- Column auto linkage needs to be modified
- Will suit LH and RH Starter Motor
- Will also fit with other available engine mounts
- Will fit with EA-EB-ED-EL-EF-AU-EFI Engines with GT-40 Heads
- Will suit AU series 3 GT40TP or GT40P heads
- Will also suit RRS Suspension / Rack
- Read note 1 on page 30

Falcon XR-XT-XW-XY-XA-XB-XC-XE-XF Fairlane ZA-ZB-ZC-ZD-ZK 289-302 Windsor Try-Y design							Part No.	CH-70*
							Gasket	CAE-016G
							Jet Hot Code	JH-003
	Prim. Pipe	Sec. Pipe	Outlet	Manual	Auto	Oxy Sensor		
			Flanged					
	1 5/8"	1 3/4"	2 1/4"	Yes	Yes	N/A		

- Will not suit LHS starter
- Will not suit early EFI Engines
- Read note 1 on page 30
- Will not suit C6 Trans.

* Denotes item is Mandrel Bent



Ford

V8

Falcon		Part No.	CH-70A*			
XR-XT-XW-XY-XA-XB-XC-XE-XF-XH-XG		Gasket	CAE-016G			
Fairlane		Jet Hot Code	JH-003			
ZF-ZK						
Engine Conversion	Prim. Pipe	Sec. Pipe	Outlet	Manual	Auto	Oxy Sensor
302 EFI Windsor	1 5/8"	1 3/4"	2 1/4"	Yes	Yes	Yes
EA-AU Engine	<ul style="list-style-type: none"> • Will suit LHS starter -EA-ED-EF-EL-AU with B.T.R. Trans • Will suit GT40P Heads--AU2, & XR8 • Will suit AU Series II -GT40TP Heads. • Read note 1 on page 30 					
Try-Y design						

Falcon		Part No.	CH-70B*			
XA-XB-XC-XE-XF		Gasket	CAE-016G			
Fairlane		Jet Hot Code	JH-003			
ZF-ZK						
Engine Conversion	Prim. Pipe	Sec. Pipe	Outlet	Manual	Auto	Oxy Sensor
302 EFI Windsor	1 5/8"	1 3/4"	Flanged 2 1/4"	Yes	Yes	x 2 Yes
AU2 and XR8 Engine	<ul style="list-style-type: none"> • Will suit RHS starter only • Will suit GT40P Heads--AU2, and XR8 • Will suit AU Series II GT40TP heads • Will suit early C4-C6 Auto and Toploader Transmission • Must use with right angle plug leads • Will only suit starter on RHS. • Read note 1 on page 30 					
Try-Y design						

Falcon 1991- 1998		Part No.	CH-102*			
EB-EL & XH - XG Ute		Gasket	CAE-016G			
Fairlane		Jet Hot Code	JH-003			
NB-NL						
Engine Conversion	Prim. Pipe	Sec. Pipe	Outlet	Manual	Auto	Oxy Sensor
302 EFI Windsor	1 1/2"	1 3/4"	2"	Yes	Yes	Yes
Try-Y design						
	• Read note 1 on page 30					

Falcon 1998-2000		Part No.	CH-103*			
AU		Gasket	CAE-016G			
Fairlane		Jet Hot Code	JH-003			
AU						
Engine Conversion	Prim. Pipe	Sec. Pipe	Outlet	Manual	Auto	Oxy Sensor
302 EFI Windsor	1 1/2"	1 3/4"	2 1/4"	Yes	Yes	Yes
Try-Y design						
	• Read note 1 on page 30					

* Denotes item is Mandrel Bent



Ford

V8

Compact Fairlane 1960 - 1964 289 - 302 Windsor Try - Y Design						Part No.	CH-111*
						Gasket	CAE-016G
						Jet Hot Code	JH-003
Prim. Pipe	Sec. Pipe	Outlet	Manual	Auto	Oxy Sensor		
1-5/8 "	1-7/8 "	2-1/4 " Flanged	Yes	Yes	No		

- Will not suit GT40 Heads or EB - AU EFI Engines
- Will suit Column Auto, T-Bar and Manual Transmissions.
- Read note 1 on page 30

Falcon XT-XR-XW-XY-XA-XB-XC-XD-XE-XF ALL FAIRLANES ZA-ZF 302-351 Cleveland 2V Try-Y design						Part No.	CH-47*
						Gasket	HTG-002
						Jet Hot Code	JH-003
Prim. Pipe	Sec. Pipe	Outlet	Manual	Auto	Oxy Sensor		
1 3/4"	2 "	2 1/2 "	Yes	Yes	N/A		

- Will fit with A/C and power steering
- Will suit C6 C10 & FMX Auto
- Suit 2V heads (see CH-47A for 4v heads)
- Will not suit column auto
- Will not suit Bosch early style starter motor.

Falcon XT-XR-XW-XY-XA-XB-XC-XD-XE-XF ALL FAIRLANES ZA-ZF 302-351 Cleveland 4V Try-Y design						Part No.	CH-47A*
						Gasket	CAE-0464VG
						Jet Hot Code	JH-003
Prim. Pipe	Sec. Pipe	Outlet	Manual	Auto	Oxy Sensor		
1 3/4"	2 "	2 1/2 " Flanged	Yes	Yes	N/A		

- Same as CH-47 but suit 4V heads
- 4 into 1 style headers CH-112A

FORD ZEPHYR Mk3 1962 289-302 Windsor Try-Y design						Part No.	CH-46*
						Gasket	CAE-016G
						Jet Hot Code	JH-003
Prim. Pipe	Sec. Pipe	Outlet	Manual	Auto	Oxy Sensor		
1 5/8"	1 3/4"	2"	Yes	Yes	N/A		

- Will fit standard steering box.

* Denotes item is Mandrel Bent



Ford

V8

Falcon XT-XR-XW-XY-XA-XB-XC-XD-XE-XF	Part No.	CH-35*
	Gasket	HTG-507
	Jet Hot Code	JH-003

Fairlane ZA-ZD to ZL-NC	Prim. Pipe	Sec. Pipe	Outlet	Manual	Auto	Oxy Sensor
Engine Conversion 429-460 Big Block	1 7/8"	2"	2 1/4"	Yes	Yes	N/A

- Will fit with Rod Shop or Pacemaker engine mounts
- Engine mounts available to suit P/N CH-EM35 - XR-XT-XW-XY and Fairlanes ZA-ZB-ZC-ZD
- also P/N CH-EM35/2 Falcons XA-XB-XC-XD-XE-XF and Fairlanes ZF-ZG-ZH-ZJ-ZK-ZL-NA-NC

Try-Y design

Falcon BA-BF	Part No.	CH-101T*
	Gasket	
	Jet Hot Code	JH-003

5.4l Boss V8 <i>Try-Y design</i>	Prim. Pipe	Sec. Pipe	Outlet	Manual	Auto	Oxy Sensor
	1 5/8"	2"	2 1/2" Flanged	Yes	Yes	Yes

- Ideal for mid range power gain
- CH-101CP BA Connecting pipe for 2 1/2" Twin System Includes Hi-Flow Cats.
- CH-101CP BF-FG Connecting pipe for 2 1/2" Twin System Includes Hi-Flow Cats.
- Complete Polished Stainless Steel system available from Cats back.
- STR-250EP Engine Pipe - STR-250S/S Intermediate Muffler - STR-251S/S Rear Muffler Hi-Flow Cats Optional
- Connecting to standard system will requires connecting pipes including cats to be modified.

Falcon BA-BF	Part No.	CH-101*
	Gasket	
	Jet Hot Code	JH-003

5.4l Boss V8 <i>4-into-1 design. Big prim</i>	Prim. Pipe	Sec. Pipe	Outlet	Manual	Auto	Oxy Sensor
	1 3/4"	N/A	3" Flanged	Yes	Yes	Yes

- Ideal for top-end power gain

Falcon BA-BF	CH-101-CPBA
	CH-101-CPBF-FG

5.4l Boss V8
Connection Pipe

- CH-101CP BA Connecting pipe for 2 1/2" Twin System Includes Hi-Flow Cats.
- CH-101CP BF-FG Connecting pipe for 2 1/2" Twin System Includes Hi-Flow Cats.
- Complete Polished Stainless Steel system available from Cats back.
- STR-250EP Engine Pipe - STR-250S/S Intermediate Muffler - STR-251S/S Rear Muffler Hi-Flow Cats Optional
- Connecting to standard system will requires connecting pipes including cats to be modified.

* Denotes item is Mandrel Bent



Ford & Fairlanes

V8

Falcon & Fairlane						Part No.	CH-112*
302-351 Cleveland 2v						Gasket	HTG-002
Suits all models						Jet Hot Code	JH-003
XR-XT-XW-XY-XA-XB-XC	Prim. Pipe	Sec. Pipe	Outlet	Manual	Auto	Oxy Sensor	
XE- XF			3"				
Fairlanes ZA-ZD to ZL-NC	1 3/4"		Flanged	Yes	Yes	No	

4-into-1 design.

- When fitting C10, Dip Stick requires Modification
- Will not suit C6, FMX or Manual Kick Down.
- Recommended to use Gear Reduction Starter Motor P/N G/R-02/1.9
- Suits Toploader Trans & Original Power Steering. Will not suit Column Change

Falcon & Fairlane						Part No.	CH-112A*
302-351 Cleveland 4V						Gasket	CAE-0464VG
Suits all models -XR-XT-XW-XY						Jet Hot Code	JH-003
XA-XB-XC-XD-XE-XF	Prim. Pipe	Sec. Pipe	Outlet	Manual	Auto	Oxy Sensor	
Fairlanes ZA-ZD to ZL-NC			3.5 "				
	1 7/8 "		Flanged	Yes	Yes	No	

4-into-1 design. big prim.

- When fitting C10 , Dip Stick requires Modification
- Will not suit C6, FMX or Manual Kick Down.
- Recommended to use Gear Reduction Starter Motor P/N G/R-02/1.9
- Suits Toploader Trans & Original Power Steering. Will not suit Column Change

Falcon & Fairlane						Part No.	CH-112B*
302-351 Cleveland 4V						Gasket	CAE-0464VG
Suits Manual Toploader &						Jet Hot Code	JH-003
with Power Steering	Prim. Pipe	Sec. Pipe	Outlet	Manual	Auto	Oxy Sensor	
4-into-1 design-big primaries			3"				
	1 7/8 "		Flanged	Yes	Yes	No	

- When fitting C10 , Dip Stick requires Modification
- Will not suit C6, FMX or Manual Kick Down.
- Will not suit Column Change
- Recommended to use Gear Reduction Starter Motor P/N G/R-02/1.9

* Denotes item is Mandrel Bent



Ford F100 - F250

V8

Ford F-100 & F-250 2WD Ford F-100 & F-250 4WD 302-351 Cleveland 2V Suits up 1979 only	Part No.	CH-117*
	Part No.	CH-118*
	Gasket	HTG-002
	Jet Hot Code	JH-003

Prim. Pipe	Sec. Pipe	Outlet	Manual	Auto	Oxy Sensor
1 3/4"	2"	2 1/4"	Yes	Yes	No

Suits Manual

Note: LH Side will require modification for Auto

Suits Air-Con. and Power Steering

Ford F-100 & F-250 2WD Ford F-100 & F-250 4WD 302-351 Cleveland 2V Suits up 1981 - 1986	Part No.	CH-117A*
	Part No.	CH-118*
	Gasket	HTG-002
	Jet Hot Code	JH-003

Ford F-100, F-250, F-350 & BRONCO 2WD & 4WD 429-460 Big Block Tri-Y Design	Part No.	CH-119*
	Gasket	HTG-002
	Jet Hot Code	JH-003

Prim. Pipe	Sec. Pipe	Outlet	Manual	Auto	Oxy Sensor
1 7/8"	2"	Flanged 2 1/2"	Yes	Yes	No

Suits Manual

• Will fit 1979 to 1984 only

Ford 6cyl Ford Truck F100-F150-F250-F350 6cyl - X Flow Engines Try-Y design	Part No.	CH-19
	Gasket	EMG-165
	Jet Hot Code	JH-010

Prim. Pipe	Sec. Pipe	Outlet	Manual	Auto	Oxy Sensor
1 1/2"	1 3/4"	2"	Yes	Yes	Yes

• Suit cross-flow, cast iron and alloy head engines

• Duel plate bolt pattern

* Denotes item is Mandrel Bent



Chrysler

6cyl

Valiant						Part No.	CH-21
<i>Slant 6</i>						Gasket	DSF-5
<i>Try-Y design</i>						Jet Hot Code	JH-010
Prim. Pipe	Sec. Pipe	Outlet	Manual	Auto	Oxy Sensor		
1 5/8"	1 3/4"	2"	Yes	Yes	N/A		
<ul style="list-style-type: none"> • Will fit with large starter motor • Will not fit with remote oil filter • Replacement for original cast iron manifolds. 							

Truck						Part No.	CH-22
<i>Slant 6</i>						Gasket	DSF-5
<i>Try-Y design</i>						Jet Hot Code	JH-010
Prim. Pipe	Sec. Pipe	Outlet	Manual	Auto	Oxy Sensor		
1 5/8"	1 3/4"	2"	Yes	Yes	N/A		
<ul style="list-style-type: none"> • Replacement for original cast iron manifolds. 							

All cars						Part No.	CH-23
<i>HEMI 6</i>						Gasket	HTG-013
<i>Try-Y design</i>						Jet Hot Code	JH-010
Prim. Pipe	Sec. Pipe	Outlet	Manual	Auto	Oxy Sensor		
1 5/8"	1 3/4"	2"	Yes	Yes	N/A		
<ul style="list-style-type: none"> • Will suit cars with A/C and Triple Webber Carburetors • Replacement for original cast iron manifolds. 							

All trucks						Part No.	CH-24
<i>HEMI 6</i>						Gasket	HTG-013
<i>Try-Y design</i>						Jet Hot Code	JH-010
Prim. Pipe	Sec. Pipe	Outlet	Manual	Auto	Oxy Sensor		
1 5/8"	1 3/4"	2"	Yes	Yes	N/A		
<ul style="list-style-type: none"> • Replacement for original cast iron manifolds. 							

* Denotes item is Mandrel Bent



Chrysler

V8

continued

Valiant						Part No.	CH-38A*
VC-VE-VF						Gasket	CAE-034G
318-360 V8						Jet Hot Code	JH-010
<i>Block Hugger design</i>						Prim. Pipe	Sec. Pipe
1966						Outlet	Manual
						Auto	Oxy Sensor
1 5/8"						2 1/2"	Yes
						Flanged	Yes
							N/A

Valiant						Part No.	CH-03*
VE-VF-VG-VH-VJ-CL-CM-CJ						Gasket	CAE-034G
273-318-360 V8						Jet Hot Code	JH-010
<i>Try-Y design</i>						Prim. Pipe	Sec. Pipe
1967-1980						Outlet	Manual
						Auto	Oxy Sensor
1 5/8"						2 1/4"	Yes
1 3/4"						Yes	Yes
							N/A

• Will fit Dodge-Charger, Challenger with original R.H.Drive Steering Box 1961 Models

Chrysler 300C V8						Part No.	CH-122
						Gasket	
						Jet Hot Code	JH-003
Prim. Pipe						Sec. Pipe	Outlet
1 3/4"						N/A	3" Flanged
						Yes	Yes
						Yes	Yes

* Denotes item is Mandrel Bent



Toyota

Landcruiser						Part No.	CH-50
80, 105, 1FZ - FE series						Gasket	
4.5l twin cam petrol						Jet Hot Code	JH-010
Try-Y design							
Prim. Pipe	Sec. Pipe	Outlet	Manual	Auto	Oxy Sensor		
1 3/4"	2"	2" Flanged	Yes	Yes	Yes		

- FZJ 80R, FZJ105.

Landcruiser						Part No.	CH-52
75, 1FZ - FE Series Ute & Pickup						Gasket	
4.5l twin cam petrol						Jet Hot Code	JH-010
Try-Y design							
Prim. Pipe	Sec. Pipe	Outlet	Manual	Auto	Oxy Sensor		
1 3/4"	2"	2" Flanged	Yes	Yes	Yes		

- FZJ 75R

Hilux						Part No.	CH-99
1992-1999						Gasket	
3.8l Holden V6 EcoTec						Jet Hot Code	JH-010
Engine Conversion							
3-into-1 design							
Prim. Pipe	Sec. Pipe	Outlet	Manual	Auto	Oxy Sensor		
1 3/4"		2" Flanged	Yes	Yes	Yes		

- Must be used with Rod Shop engine mounts P/N-M11RV6
- May also fit with Mark's 4WD engine mounts

Landcruiser						Part No.	CH-98A
80, 105, 1FZ, FE Series						Gasket	HTG-548
						Jet Hot Code	JH-010
Prim. Pipe	Sec. Pipe	Outlet	Manual	Auto	Oxy Sensor		
1 3/4"	2"	2"	Yes	Yes	Yes		

- Block Hugger will fit with LS1-2-3 Chev engine conversion

* Denotes item is Mandrel Bent



Nissan

Patrol						Part No.	CH-45
GQ						Gasket	
Ford						Jet Hot Code	JH-010
Maverick							
Prim. Pipe	Sec. Pipe	Outlet	Manual	Auto	Oxy Sensor		
1 3/4"	2"	2"	Yes	Yes	Yes		
TB-42 6cyl petrol							
TD-42 Diesels							
Try -Y-Design							
<ul style="list-style-type: none"> • Will fit with A/C and power steering • Will also fit 4.2l carby, EFI & Diesel engines • Fitting Time 2 Hours. 							

Nissan 300ZX - Z30-Z31-Z32						Part No.	CH-123
						Gasket	HTG-548
						Jet Hot Code	JH-010
Prim. Pipe	Sec. Pipe	Outlet	Manual	Auto	Oxy Sensor		
1 3/4"	2"	2 1/2"	Yes	Yes	Yes		

Nissan Patrol						Part No.	CH-98A
GQ						Gasket	HTG-548
Ford Maveric						Jet Hot Code	JH-010
Prim. Pipe	Sec. Pipe	Outlet	Manual	Auto	Oxy Sensor		
1 3/4"		3" Flanged	Yes	Yes	Yes		
<ul style="list-style-type: none"> • Block Hugger will fit with LS1-2-3 Chev engine conversion 							
Y piece to join exhaust							CH-98A Y PIECE
Centre piece to join exhaust							CH-98A C/P

* Denotes item is Mandrel Bent



BMC/Leyland Mini

Mini 1961 onwards (all models) 998cc-1275cc Try-Y design						Part No.	CH-104
						Gasket	
						Jet Hot Code	JH-009
	Prim. Pipe	Sec. Pipe	Outlet	Manual	Auto	Oxy Sensor	
	1 3/8"	1 1/2"	2"	Yes	Yes	N/A	

- Long branch outlet

Mini 1961 onwards (all models except Cooper S)) 998cc-1275cc 4-into-1 design						Part No.	CH-105
						Gasket	
						Jet Hot Code	JH-009
	Prim. Pipe	Sec. Pipe	Outlet	Manual	Auto	Oxy Sensor	
	1 3/8"		2"	Yes	Yes	N/A	

- Short branch outlet

* Denotes item is Mandrel Bent



International

Truck						Part No.	CH-29
1610 & A-series 240, 260, 281						Gasket	
6cyl						Jet Hot Code	JH-003
Try-Y design							
Prim. Pipe	Sec. Pipe	Outlet	Manual	Auto	Oxy Sensor		
1 3/4"	1 7/8"	2"	Yes	Yes	N/A		

• Will not fit with CAV starter

Acco						Part No.	CH-43
C-1800, 510 & 1910 - Cab Over Engine Style Body						Gasket	HTG-501
345-392 V8						Jet Hot Code	JH-003
Try-Y design							
Prim. Pipe	Sec. Pipe	Outlet	Manual	Auto	Oxy Sensor		
1 3/4"	2"	2 1/2"	Yes	Yes	N/A		

Acco						Part No.	CH-43A
C&D series 1710A & 1810A Long Nose bonnet Body						Gasket	HTG-501
345-392 V8						Jet Hot Code	JH-003
Try-Y design							
Prim. Pipe	Sec. Pipe	Outlet	Manual	Auto	Oxy Sensor		
1 3/4"	2"	2 1/2"	Yes	Yes	N/A		

* Denotes item is Mandrel Bent



Bedford

Truck						Part No.	CH-26
214J series						Gasket	
6cyl						Jet Hot Code	JH-010
Try-Y design							
Prim. Pipe	Sec. Pipe	Outlet	Manual	Auto	Oxy Sensor		
1 1/2"	1 3/4"	2"	Yes	Yes	N/A		

Truck & Bus						Part No.	CH-41
300						Gasket	
6cyl						Jet Hot Code	JH-010
Try-Y design							
Prim. Pipe	Sec. Pipe	Outlet	Manual	Auto	Oxy Sensor		
1 3/4"	2"	2 1/2"	Yes	Yes	N/A		

* Denotes item is Mandrel Bent



BMW

E-36 3 series						Part No.	CH-109*
<i>318iS, Ti & TS</i>							
<i>4cyl Twin Cam</i>						Jet Hot Code	JH-009
<i>Try-Y design</i>							
Prim. Pipe	Sec. Pipe	Outlet	Manual	Auto	Oxy Sensor		

1 5/8"	1 3/4"	Flanged*	Yes	Yes	N/A
--------	--------	----------	-----	-----	-----

- Replacement for factory headers. Bolts to original 4 bolt flange
- Only suit twin-cam engine

* Denotes item is Mandrel Bent



Block Hugger Headers

Chev						Part No.	CH-13*
						Gasket	HTG-548
	<i>Small Block V8</i>					Jet Hot Code	JH-001
	Prim. Pipe	Sec. Pipe	Outlet	Manual	Auto	Oxy Sensor	
	1 5/8"		3" Flanged	N/A	N/A	N/A	

- Suit VORTEC engine with straight plug heads

Chev						Part No.	CH-13SS*
						Gasket	HTG-548
	<i>Small Block V8</i>						
	Prim. Pipe	Sec. Pipe	Outlet	Manual	Auto	Oxy Sensor	
	1 5/8"		3" Flanged	N/A	N/A	N/A	

- Same design as CH-13 but in polished Stainless Steel

Chev						Part No.	CH-13BSS*
						Gasket	HTG-548
	<i>Small Block V8</i>						
	Prim. Pipe	Sec. Pipe	Outlet	Manual	Auto	Oxy Sensor	
	1 5/8"		3" Flanged	N/A	N/A	N/A	

- Polished Stainless Steel
- Exits at rear of head

Chev						Part No.	CH-13C*
						Gasket	HTG-548
	<i>Small Block V8</i>					Jet Hot Code	JH-001
	Prim. Pipe	Sec. Pipe	Outlet	Manual	Auto	Oxy Sensor	
	1 5/8"		3" Flanged	N/A	N/A	N/A	

- Rams horn design.
- Suit straight & angle plug heads

* Denotes item is Mandrel Bent



Block Hugger Headers

Chev	Part No.	CH-13D*
	Gasket	HTG-548
	Jet Hot Code	JH-001

Small Block V8

Prim. Pipe	Sec. Pipe	Outlet	Manual	Auto	Oxy Sensor
1 5/8"		2 1/2" Flanged	N/A	N/A	N/A

- Features inline 4 into 1 collector for extra clearance
- Will fit with angle plug heads
- Will fit EH Holden with R & P steering

Chev	Part No.	CH-13E*
	Gasket	HTG-548
	Jet Hot Code	JH-001

Small Block V8

Prim. Pipe	Sec. Pipe	Outlet	Manual	Auto	Oxy Sensor
1 5/8"		3" Flanged	N/A	N/A	N/A

- Extra clearance between engine block & header for R & P Steering.
- Suit bith Straight and Angle Plug heads
- Will suit Wazrodz '34 Chev.

Chev	Part No.	CH-39*
	Gasket	CAE-011G
	Jet Hot Code	JH-001

Big Block V8

Prim. Pipe	Sec. Pipe	Outlet	Manual	Auto	Oxy Sensor
2"		3 1/2" Flanged	N/A	N/A	N/A

- Will fit 1958-64 Chev - RH Drive and LH Drive
- Suitable for all Hot-Rods

* Denotes item is Mandrel Bent



Block Hugger Headers

LS-1-2-3 Engines

Chev/Holden	Part No.	CH-98*
	Gasket	HTG-548
	Jet Hot Code	JH-001

GENIII 5.7l & LS2 6l V8

Prim. Pipe	Sec. Pipe	Outlet	Manual	Auto	Oxy Sensor
1 3/4"		3" Flanged	N/A	N/A	Yes

- Ideal for 4WDives, Toyota Landcuiser and Hot Rod conversions.
- Outlet drops straight down behind engine mounts.

Chev/Holden	Part No.	CH-98A*
	Gasket	HTG-548
	Jet Hot Code	JH-001

All LS-1-2-3Engines

Prim. Pipe	Sec. Pipe	Outlet	Manual	Auto	Oxy Sensor
1 3/4"		3" Flanged	N/A	N/A	Yes

- Ideal for 4WDives, Nissan Patrol, Toyota Landcuiser and Hot Rod conversions.
- Outlet exits at rear of head angled back suit 4WD.

* Denotes item is Mandrel Bent



Block Hugger Headers

Ford						Part No.	CH-20*
						Gasket	CAE-016G
<i>Windsor V8</i>						Jet Hot Code	JH-001
Prim. Pipe	Sec. Pipe	Outlet	Manual	Auto	Oxy Sensor		
1 5/8"		3" Flanged	N/A	N/A	N/A		

- Will not fit GT40 heads

Ford						Part No.	CH-20A*
						Gasket	CAE-016G
<i>Windsor V8</i>						Jet Hot Code	JH-001
Prim. Pipe	Sec. Pipe	Outlet	Manual	Auto	Oxy Sensor		
1 5/8"		2 1/2" Flanged	N/A	N/A	N/A		

- Features inline 4 into 1 collector for extra clearance

Ford						Part No.	CH-20B*
						Gasket	CAE-016G
<i>Windsor V8</i>						Jet Hot Code	JH-001
Prim. Pipe	Sec. Pipe	Outlet	Manual	Auto	Oxy Sensor		
1 5/8"		2 1/2" Flanged	N/A	N/A	Yes		

- Designed EF-AU EFI engine with LHS starter. Provision for oxy sensors on both sides
- Features inline 4 into 1 collector for extra clearance
- Will suit GT40TP Heads - Suggest to use right angle plug leads.

Ford						Part No.	CH-40SS*
						Gasket	CAE-016G
<i>Windsor V8</i>						Jet Hot Code	
Prim. Pipe	Sec. Pipe	Outlet	Manual	Auto	Oxy Sensor		
1 5/8"		3" Flanged	N/A	N/A	N/A		

- Polished Stainless Steel
- Exits behind the rear ports. Suits EFI engines with RHS or LHS starter

* Denotes item is Mandrel Bent



Block Hugger Headers

Ford						Part No.	CH-30*
						Gasket	HTG-002
						Jet Hot Code	JH-001
<i>Cleveland V8</i>							
<i>Ford F100, D Series</i>	Prim. Pipe	Sec. Pipe	Outlet	Manual	Auto	Oxy Sensor	
	1 3/4"		3" Flanged	N/A	N/A	N/A	

- Known to fit the following applications: '79 series II Jag, '85-'86 Landcruiser, 53 - 64 F-100, and D - Series Ford.

- Fits most Hot Rod applications & engine conversions

Ford						Part No.	CH-30 4V*
						Gasket	CAE-0464VG
						Jet Hot Code	JH-001
<i>Cleveland V8</i>							
	Prim. Pipe	Sec. Pipe	Outlet	Manual	Auto	Oxy Sensor	
	1 3/4"		3" Flanged	N/A	N/A	N/A	

- Same as CH-30 but to suit 4V heads

Ford						Part No.	CH-30A*
						Gasket	HTG-002
						Jet Hot Code	JH-001
<i>Cleveland V8</i>							
	Prim. Pipe	Sec. Pipe	Outlet	Manual	Auto	Oxy Sensor	
	1 3/4"		3" Flanged	N/A	N/A	N/A	

- Drivers side is tighter to clear chassis rails and steering shaft. Ideal for A-Model's

- Must be used with gear reduction starter G/R-02/A or M

Ford						Part No.	CH-53*
						Gasket	HTG-507
						Jet Hot Code	JH-001
<i>429-460 Big Block V8</i>							
	Prim. Pipe	Sec. Pipe	Outlet	Manual	Auto	Oxy Sensor	
	2"		3 1/2" Flanged	N/A	N/A	N/A	

* Denotes item is Mandrel Bent



Block Hugger Headers

Ford						Part No.	CH-54*
						Gasket	CAE-024G
<i>Sidevalve</i>						Jet Hot Code	JH-001
Prim. Pipe	Sec. Pipe	Outlet	Manual	Auto	Oxy Sensor		
1 5/8"		2 1/2" Flanged	N/A	N/A	N/A		
<ul style="list-style-type: none"> • Both sides exit below middle port • Known to fit '52 Ford pickup and '53 Ford Customline • Fit early & late engines 							

Ford						Part No.	CH-54A*
						Gasket	CAE-024G
<i>Sidevalve</i>						Jet Hot Code	JH-001
Prim. Pipe	Sec. Pipe	Outlet	Manual	Auto	Oxy Sensor		
1 5/8"		2 1/2" Flanged	N/A	N/A	N/A		
<ul style="list-style-type: none"> • Fit early & late engines • Drivers side exits at front of engine, Passenger side exits below middle port 							

Holden						Part No.	CH-34*
						Gasket	HTG-013
<i>253-308 V8</i>						Jet Hot Code	JH-001
Prim. Pipe	Sec. Pipe	Outlet	Manual	Auto	Oxy Sensor		
1 5/8"		3" Flanged	N/A	N/A	N/A		

Holden						Part No.	CH-75*
						Gasket	HTG-513
<i>5ltr EFI V8</i>						Jet Hot Code	JH-001
Prim. Pipe	Sec. Pipe	Outlet	Manual	Auto	Oxy Sensor		
1 5/8"		3" Flanged	N/A	N/A	Yes		
<ul style="list-style-type: none"> • Must be used with Holden HQ-WB V8 engine mounts • Will suit 5ltr conversions into Toyota Landcruiser and Nissan Patrol 							

Holden						Part No.	CH-75A*
<ul style="list-style-type: none"> • Must be used with Commodore V8 engine mounts will suit HQ-WB Engine mounts • Ideal for 4WD Conversions 							

* Denotes item is Mandrel Bent



Block Hugger Headers

Chrysler						Part No.	CH-38*
						Gasket	CAE-034G
318-360 Small Block						Jet Hot Code	JH-001
Prim. Pipe	Sec. Pipe	Outlet	Manual	Auto	Oxy Sensor		
1 5/8"		3" Flanged	N/A	N/A	N/A		

Chrysler						Part No.	CH-48*
						Gasket	CAE-067G
383-440 Big Block						Jet Hot Code	JH-001
Prim. Pipe	Sec. Pipe	Outlet	Manual	Auto	Oxy Sensor		
1 7/8"		3 1/2" Flanged	N/A	N/A	N/A		
<ul style="list-style-type: none"> • Also available in polished Stainless Steel 							CH-48SS
Note: will also fit Dodge Phoenix							

Chrysler						Part No.	CH-107SS*
						Gasket	
HEMI 354-392-426							
Prim. Pipe	Sec. Pipe	Outlet	Manual	Auto	Oxy Sensor		
2"		3 1/2" Flanged	N/A	N/A	N/A		
<ul style="list-style-type: none"> • Polished Stainless Steel 							

Chrysler						Part No.	CH-108*
						Gasket	
5.6Ltr (345C.I.) Hemi						Jet Hot Code	JH-001
Prim. Pipe	Sec. Pipe	Outlet	Manual	Auto	Oxy Sensor		
1 3/4"		3" 2 Bolt Flanged	N/A	N/A	Yes		
Suit Hot Rod - Kit Cars and Engine Conversions							

* Denotes item is Mandrel Bent



Block Hugger Headers

Toyota						Part No.	CH-85*
						Gasket	CAE-095G
<i>Toyota/Lexus V8</i>						Jet Hot Code	JH-001
Prim. Pipe	Sec. Pipe	Outlet	Manual	Auto	Oxy Sensor		
1 5/8 "		3 " Flanged	N/A	N/A	N/A		

* Denotes item is Mandrel Bent



Boat Headers

Chev Part No. **CH-90***
 Gasket **CAE-O11G**
 Jet Hot Code **JH-003**

Big Block

Prim. Pipe	Sec. Pipe	Outlet	Manual	Auto	Oxy Sensor
2"*		4"	N/A	N/A	N/A

4-into-1 design

- Features over transit
- Also available with 2 1/4" primaries
- Can be supplied with "Merge" style collectors - P.O.A.

Chev Part No. **CH-90A***
 Gasket **HTG-548**
 Jet Hot Code **JH-003**

Small Block

Prim. Pipe	Sec. Pipe	Outlet	Manual	Auto	Oxy Sensor
2"*		3-1/2"	N/A	N/A	N/A

4-into-1 design

- Features over transit
- Dual Adaptor plates.

Note: These pipes are also available in 1-7/8 " Primaries.

- Can be supplied with "Merge" style collectors - P.O.A.

Part No. **CH-90C**
 Part No. **CH-Merg-8**
 Jet Hot Code **JH-003**

Chev Part No. **CH-90B***
 Gasket **HTG-548**
 Jet Hot Code **JH-003**

Small Block

Prim. Pipe	Sec. Pipe	Outlet	Manual	Auto	Oxy Sensor
1-3/4 "		3 "	N/A	N/A	N/A

4-into-1 design

- Features over transit
- Can be supplied with "Merge" style collectors - P.O.A.

Part No. **CH-Merg-8**
 Jet Hot Code **JH-003**

* Denotes item is Mandrel Bent



Sprint Car

Chev	Part No.	CH-110-2"*
	Gasket	HTG-548
	Jet Hot Code	JH-003

Small block
with 23 degree head
4-into-1 design

Prim. Pipe	Sec. Pipe	Outlet	Manual	Auto	Oxy Sensor
2 "		3.5 "	N/A	N/A	N/A

- Can be supplied in Stepped Design. e.g. 1-7/8 " to 2 ", 1-3/4 " to 1-7/8 "
- Also available with Merge Style Collectors P.O.A.

Chev	Part No.	CH-110-1 7/8*
	Gasket	HTG-548
		Option
	Part No.	CH-Merg-8
	Jet Hot Code	JH-003

Small block
4-into-1 design

Prim. Pipe	Sec. Pipe	Outlet	Manual	Auto
1 7/8"		3.5 "	N/A	N/A

Chev	Part No.	CH-110A*
	Gasket	
	Jet Hot Code	JH-003

Small block
with 23 degree head
4-into-1 design

Prim. Pipe	Sec. Pipe	Outlet	Manual	Auto	Oxy Sensor
1-3/4 "		3 "	N/A	N/A	N/A

- Also available with Merge Style Collectors P.O.A.

Ford V8 Windsor	Part No.	CH-110B *
	Gasket	CAE-016G
	Jet Hot Code	JH-003

Prim. Pipe	Sec. Pipe	Outlet	Manual	Auto	Oxy Sensor
1-3/4 "		3 "	N/A	N/A	N/A

- Supplied with Dual Adapter Plates
- Also available with Merge Style Collectors P.O.A

Holden V6	Part No.	CH-113*
	Gasket	HTG-021
	Jet Hot Code	JH-003

VN, VP, VR
3-into 1 Design

Prim. Pipe	Sec. Pipe	Outlet	Manual	Auto	Oxy Sensor
1-5/8 "		3 "	N/A	N/A	N/A

Also Available in 1-1/2 " Primaries	Part No.	CH-113A*
	Jet Hot Code	JH-003

* Denotes item is Mandrel Bent



Header plates & Flanges

All plates laser cut from 10mm Mild or Stainless Steel unless noted

Chev	Port Size	Part No.
Small Block Chev	1 3/4 "	HP-SB/1
Small Block Chev	1 5/8"	HP-SB/1 5/8
Small Block Chev Stainless Steel	1 5/8"	HP-SB/1SS
Small Block Chev adaptor plates	1 3/4"	HP-SB 1 3/4
Small Block Chev adaptor plates	1 7/8"	HP-SB 1 7/8
Small Block Chev adaptor plates	2"	HP-SB1-2"
Small Block Nascar Heads	2"	HP-SB2
Small Block Chev D-port GEN II	1 5/8"	HP-SB/3
5.7l GEN III & 6l LS-2	1 5/8"	HP-GEN3 1 5/8
5.7l GEN III & 6l LS-2	1 3/4"	HP-GEN3
5.7l GEN III & 6l LS-2	1 7/8"	HP-GEN3 1 7/8
5.7l GEN III & 6l LS-2	2"	HP-GEN3 2
Chev SB 18° heads and Racer Pro	1 3/4"	HP-SB/4A
Chev SB 18° heads and Racer Pro	1 7/8"	HP-SB/4
Chev SB Brodix heads	1 7/8"	HP-SB/BRO
Chev SB Pro Topline Alum. Heads	1 7/8"	HP-SB Pro
Racer Pro heads. Spread ports	2"	HP-RP/1
V6 Chev	1 5/8"	HP-V6/1
V8 6ltr Diesel Chev	1 5/8"	HP-V8/1
Big Block Chev	1 3/4"	HP-BB/4
Big Block Chev	2"	HP-BB/1
Big Block Chev Stainless Steel	2"	HP-BB/1SS
Big Block Chev	2 1/4"	HP-BB/2
Big Block Chev Stainless Steel	2 1/4"	HP-BB/2 SS
Big Block 409 Chev	2"	HP-BB/3
Big Block Dart#2	2-1/2"	HP-BB/5
Big Block Dart#2	2-3/8"	HP-BB6
Big Block with GM-Pro-Stock Heads	2-1/8"	HP-BB/7-SS
Big Block with GM-Pro-Stock Heads	2-1/4"	HP-BB/8-SS
Holden	Port Size	Part No.
253-308 V8	1 5/8"	HP-H8
253-308 V8	1 7/8 "	HP-H8A
5ltr EFI V8	1 5/8"	HP-H VN8
5ltr EFI V8	1 3/4"	HP-H VN8 1 3/4
6cyl Red motor (12mm)	1 5/8"	HP-H6R
6cyl Blue & Black motor (12mm)	1 5/8"	HP-H6B
RB30 VL Commodore 6cyl	1 5/8"	HP-H1
VN-VP-VR 6cyl non-EcoTec	1 5/8"	HP-HVN6
VS onwards 6cyl EcoTec	1 5/8"	HP-HV6

* Denotes item is Mandrel Bent



Header plates & Flanges

All plates laser cut from 10mm Mild or Stainless Steel unless noted

Holden (continued)	Port Size	Part No.
Alloytech V6	1 5/8"	HP-HAV6
Gemini / Rodeo 4 cyl	1 5/8"	HP-HGEM
6cyl Grey Motor	1 1/2"	HP-GREY
Ford	Port Size	Part No.
4cyl 1600. Siamese ports	1 1/2"	HP-F14
4cyl 2l Escort	1 1/2"	HP-F10
6cyl BA-BF Falcon 4.0l	1 5/8"	HP-F9
6cyl EA-AU Falcon	1 5/8"	HP-F8
6cyl Falcon cast iron & alloy cross-fl	1 5/8"	HP-F5
6cyl 170-220-250 conventional	1 5/8"	HP-F6
AFR - Dart II Roush heads	1-5/8"	HP-F4 *
AFR - Dart II Roush heads	1-3/4 "	HP-F4A*
AFR - Dart II Roush heads	1-7/8 "	HP-F4B*
AFR - Dart II Roush heads	2"	HP-F4C*
AFR - Dart II Roush heads	1-3/4"	HP-F4A S/S*
AFR - Dart II Roush heads	1-7/8"	HP-F4B S/S*
AFR - Dart II Roush heads	2"	HP-F4C S/S*
Windsor V8	1 5/8"	HP-FW/1
Windsor V8 adaptor plates	1 3/4"	HP-FW/3
Windsor V8 adaptor plates	1 7/8"	HP-FW/4
Windsor V8 adaptor plates	2"	HP-FW/2
Windsor V8 Edelbrock Glidden heac	1 7/8"	HP-F15
Windsor V8 Victor Junior	2"	HP-F16
Cleveland V8. 4V heads	1 3/4"	HP-FC/2
Cleveland V8. 2V heads	1 5/8"	HP-FC/1
FE 390-427 Big Block	1 7/8"	HP-F7
429-460 Big Block	1 7/8"	HP-F1
429-460 Big Block with Hi Port Heac	1 7/8 "	HP-F1 Hi Port
V8 Sidevalve	1 5/8"	HP-F2
272 Y-block	1 3/4"	HP-F3
4.6l USA V8 engine	1 3/4"	HP-F11
5.4l BA Falcon V8 quad cam	1 3/4"	HP-F12
Cleveland Yates heads.	1 7/8"	HP-F13
Cleveland Yates heads.	2"	HP-F13A
Chrysler	Port Size	Part No.
273-318-360 Small Block	1 5/8"	HP-C1
383-440 Small Block	1 7/8"	HP-C2
426 HEMI-inc Indy Heads	2"	HP-C3-2"
426 HEMI-inc Indy Heads	2-1/4 "	HP-C3-2.25"
Keith Black HEMI stage II	2"	HP-C4

* indicates all FORD Windsor AFR/DART II Roush Heads with 76mm (3") Bolt Spacing

* Denotes item is Mandrel Bent



Header plates & Flanges

All plates laser cut from 10mm Mild or Stainless Steel unless noted

Chrysler (continued)	Port Size	Part No.
Slant 6	1 5/8"	HP-C5
HEMI 6	1 5/8"	HP-C6
331-354-392 HEMI	1 3/4"	HP-C7
331-354-392 HEMI	1 3/4"	HP-C7SS 304 Stainless Steel
331-354-392 HEMI	1 7/8"	HP-C7
331-354-392 HEMI	2"	HP-C7
313-318 Canadian Ploy engine	1 3/4"	HP-C8
345-5.7Lt Hemi	1 3/4"	HP-C9
Toyota	Port Size	Part No.
Toyota/Lexus V8	1 3/4"	HP-LEXUS V8
Toyota / Lexus V8 S/Steel	1-3/4"	HP-LEXUS V8 S/S
Toyota / 1JZ GTE	30mm	HP-1JZ GTE
Isuzu	Port Size	Part No.
Isuzu 3.5l V6	1 5/8"	HP-ISU V6
Isuzu Rodeo / Gemini 4cyl	1 5/8"	HP-HGEM
Buick	Port Size	Part No.
Buick Chev plates.	2" or 2 1/8"	HP-BC/1
Buick V6	1 5/8"	HP-B1
Buick V8 430B/B	1-7/5 "	HP-B2
Nissan/Datsun	Port Size	Part No.
Datsun 1600-2000	1 5/8"	HP-N1
4.2l Patrol/Maverick	1 5/8"	HP-N2
VQ35-V6	1 3/4"	HP-N3 and Stainless/Steel HP-N3 S/S
Oldsmobile 303 V8	Port Size	Part No.
Oldsmobile 1956 324 V8	1-3/4"	HP-01
Oldsmobile 1956 324 V8	1-3/4"	HP-02
CADILLAC		
V8 Big/Block	1 3/4"	HP-CADV8
Honda S2000	Port Size	Part No.
Honda S2000	1-7/8-2.0"	HP-Hon/ss

* Denotes item is Mandrel Bent



Collectors

3 Bolt Flanges 6mm thick	Port Size	Part No.		
	1 5/8"	COLL-PL301		
	1 3/4"	COLL-PL302		
	2"	COLL-PL303		
	2 1/4"	COLL-PL304		
	2 1/2"	COLL-PL305		
	3"	COLL-PL306		
	3 1/2"	COLL-PL307		
	4"	COLL-PL308		
2 Bolt Flanges 10mm thick	Port Size	Part No.		
	2"	COLL-PL201		
	2 1/4"	COLL-PL202		
	2 1/2"	COLL-PL203		
	3"	COLL-PL204		
2 into 1	Inlet	Outlet	Part No.	
	1 5/8"	1 3/4"	COLL-21	
	1 3/4"	2"	COLL-22	
	2"	2 1/4"	COLL-23	
	2"	2 1/2"	COLL-20	
3 into 1	Inlet	Outlet	Part No.	
	1 1/2"	2 1/2"	COLL-30	
	1 5/8"	1 3/4"	COLL-31	
	1 5/8"	2 1/2"	COLL-32	
	1 3/4"	2 1/2"	COLL-33	
4 into 1	Inlet	Outlet	Part No.	
	1 5/8"	3"	COLL-41	
	<i>Inline Collector</i>	1 5/8"	2 1/2"	COLL-48
		1 3/4"	3"	COLL-42
		1 7/8"	3 1/2"	COLL-43
		2"	3 1/2"	COLL-44
		2"	4"	COLL-45
		2 1/8"	3 1/2"	COLL-46
		2 1/4"	4"	COLL-47
	<i>Slip-fit (can be supplied with sphere:</i>	1 7/8"	3 1/2"	COLL-SLIP41
	<i>Slip-fit (can be supplied with sphere:</i>	2"	3 1/2"	COLL-SLIP42
	<i>Slip-fit (can be supplied with sphere:</i>	2"	4"	COLL-SLIP43
	<i>Slip-fit (can be supplied with sphere:</i>	2 1/4"	4"	COLL-SLIP44

* Denotes item is Mandrel Bent



Reducer Cones (with 3 bolt flange)	Inlet	Outlet	Part No.
	2 1/2"	2"	COLL-RED01
	3"	2"	COLL-RED02
	2 1/2"	2 1/8"	COLL-RED03
	3"	2 1/2"	COLL-RED04
	3 1/2"	2 1/2"	COLL-RED05
	4"	3"	COLL-RED06
	3"	2 1/4"	COLL-RED07
2 bolt flange	3"	2 1/4"	COLL-RED08

Hot Rod style exhaust cones. Customer to supply specifications (length, inlet, outl COLL-CONE

MERG COLLECTORS



Type	Inlet	Outlet	Part No.
4 into 1	1 3/4"	3"	CH-MERG-1
2 into 1	1 7/8"	3"	CH-MERG-2
4 into 1	1 7/8"	3 1/2"	CH-MERG-3
4 into 1 Stainless only	2 1/4"	4"	CH-MERG-4
4 into 1	2 1/8"	3 1/2"	CH-MERG-5
2 into 1	2"	2 1/4"	CH-MERG-6
2 into 1	2 1/4"	3	CH-MERG-7
4 into 1	2"	3"	CH-MERG-8
4 into 1	1 7/8"	3"	CH-MERG-9
4 into 1	1 5/8"	2 1/2"	CH-MERG-12
4 into 1 Stainless Steel	2 1/2"	5"	CH-MERG-13

* Denotes item is Mandrel Bent



Engine Mounts

Holden HQ-HJ-HZ-HX-WB fitted with: 3.8l V6 Ecotec & Non Ecotec	<ul style="list-style-type: none"> Suit vehicles with A/C. For non-A/C use CH-EM60 Requires A1156 rubbers Must use with Sump 04C 	Part No. CH-EM34KIT
Holden Gemini fitted with: 3.8l V6 non-EcoTec	<ul style="list-style-type: none"> Includes rubbers 	Part No. CH-EM64
Holden FJ-EH-HD-HR-HK-HT-HG and Torana LC-LJ-LH-LX-UC fitted with: 3.8l V6 non-EcoTec & EcoTec	<ul style="list-style-type: none"> Includes rubbers -- A1156. Must use with Sump 04A - V6 Ecotec Must use with Sump 04B - V6 Non Ecotec 	Part No. CH-EM60
Holden HQ-HJ-HZ-HX-WB & HK-HT-HG & Torana LC-LJ-LH-LX- fitted with: 253-308 & 5ltr EFI	<ul style="list-style-type: none"> Engine Mount Brackets only - Requires A1135 rubbers for HK-HT-HG Engine Mount Brackets only - Requires A1157 rubbers for HQ-WB & all Torana's 	Part No. CH-EM89
Holden EJ-EH-HQ-HJ-HZ-HX-WB & HK-HT fitted with: 5.7l GEN III & 6l LS-2	<ul style="list-style-type: none"> Engine Mount Brackets Includes rubbers Power Mount suits Holden HK-HT-HG HQ to WB & all Torana's NOTE: May not fit some aftermarket engine blocks 	Part No. CH-EM89P/M
Holden EJ-EH-HQ-HJ-HZ-HX-WB & HK-HT fitted with: 5.7l GEN III & 6l LS-2	<ul style="list-style-type: none"> Engine Mount Brackets Includes rubbers Power Mount suits Holden HK-HT-HG HQ to WB & all Torana's NOTE: May not fit some aftermarket engine blocks 	Part No. CH-EM69
Holden Torana LC-LJ-LH-LX-UC fitted with: 5.7l GEN III & 6l LS-2	<ul style="list-style-type: none"> Engine Mount Brackets Includes rubbers 	Part No. CH-EM70
Holden Commodore VB-VS fitted with: 5.7l GEN III & 6l LS-2	<ul style="list-style-type: none"> Engine Mount Brackets Includes rubbers Both of these engine mounts can only be used with V8 K-frame NOTE: May not fit some aftermarket engine blocks 	Part No. CH-EM80A
Holden Commodore VL- RB30 6cyl	<ul style="list-style-type: none"> Power Mount suit Commodore VL RB30 6cyl K-Frame with LS1-2-3 Conversion If using VN-VS-V6 K-Frame use 	Part No. CH-EM80-VL6P/M
Power Mount	<ul style="list-style-type: none"> Replaces A1115 Engine mount rubbers 	Part No. CH-EM80-V6
Power Mount	<ul style="list-style-type: none"> Replaces A1115 Engine mount rubbers 	Part No. 3-1108G
NOTE:	<ul style="list-style-type: none"> Power Mount products are designed to suit original V8 and V6 engine blocks and therefore may not suit aftermarket engine blocks. 	

* Denotes item is Mandrel Bent



Engine Mounts

Power Mount Part No. **CH-TM-2**

- Suits Commodore VT-VE with GM 92201460 rubbers
- Superceded by 3-1108G Transmission mou
- Replaces A1115 Engine mount rubbers

Power Mount Part No. ~~**CH-TM-3**~~

Holden Part No. **CH-EM02**

HQ-HJ-HZ-HX-WB
Torana LH-LX-UC

- Engine Mount Brackets only - Requires A1157 rubbers

Commodore VB-VS Part No. **CH-EM02P/M**

fitted with: • Power Mount suit Small Block & Big Block Chev
Small Block & Big Block Chev

Holden Part No. **CH-EM31**

HK-HT-HG
Torana LC-LJ

- Requires A1128 Rubbers
- Thick mount goes on drivers side

fitted with:
Small Block & Big Block Chev

Holden Part No. **CH-EM66**

Torana LC-LJ-LH-LX-UC

fitted with:
Nissan RB30 6cyl

Holden Part No. **CH-EM67**

FJ-EH

fitted with:
Nissan RB30 6cyl

Holden Part No. **CAE-359**

253-308

*Transmission Adaptor Plate
suit early Holden 253-308 block to GM Turbo Bolt Pattern*

Chev Part No. **CH-EM36 B/B**

1955-56-57

Part No. **CH-EM36 S/B**

fitted with:
Small Block & Big Block Chev

Note: may not suit some Rack and Pinion Conversion Kits.

Chev Part No. **H-EM83-BASE**

1955-56-57

- Includes rubbers

CH-EM83-TOP

fitted with: • Uses ChevS/B Style Rubber Mounts
5.7l GEN III & LS-2 & LS-3 Engines

Chev Truck C10- C20 Part No. **CH-EM91**

- Includes rubbers

Nissan 300ZX-Z30-Z31-Z32 Part No. **CH-EM92**

fitted with: • LS-1-2-3 Chev Engine Conversion (Power Mount Style)
• Fitted with 5.7L LS-1 LS-2 LS-3

* Denotes item is Mandrel Bent



Engine Mounts

Chev Part No. **CH-EM03**
1958-64-65-70

- Fitted with 5.7L LS-1 LS-2 LS-3 LS-4

fitted with: • Includes Engine Mount Base Plate and Rubbers

Rubbers not supplied

Ford Part No. **CH-EM35/1**
Falcon XT-XR-XY-XW

fitted with:
429-460 Big Block

Ford Part No. **CH-EM35/2**
Falcon XA-XB-XC-XD-XE-XF

fitted with:
429-460 Big Block

Ford Part No. **CH-EM72**
Transit Van

fitted with:
Holden 3.8l V6

Ford Part No. **CH-EM07**
Falcon XR-XT-XW-XY

fitted with:
Falcon BA-BF-FG - BARRA 6cyl Engine

Kit includes engine and transmission cross members

Option: Engine mount rubbers

A1140

Ford Part No. **CH-EM08**
Falcon XK-XL-XP-XM

- Kit includes radiator mounts, tie bar, engine mount and gearbox x-member

fitted with: • Will suit EFI engine EA-AU
289-302 Windsor

Ford Part No. **CH-EM19**
Falcon XA-XB-XC-XD-XE-XF-XG Uti

- Kit includes radiator mounts, tie bar, engine mount and gearbox x-member

fitted with:
Cleveland & Windsor

Ford Part No. **CH-EM17**
Cortina TC-TD

- Engine mount kit includes Engine mounts, Trans cross member and Chassis tabs.

fitted with:
Windsor

Toyota Part No. **CH-EM75**
Hi-lux

fitted with:
Holden 3.8l V6

Rubbers	Part No.	Application
	EM1128	Chev V8
	A1135	HG 308 V8
	A1156	6cyl Holden
	A1157	HQ 308 V8

* Denotes item is Mandrel Bent



V-Bands & Sealing Flanges

V-Bands clamps have been around for ages. They are used in a variety of commercial, industrial and racing applications. In many cases the end of a tube/pipe is pressed to form the flange. We have designed weld flanges that can be used to replace the old 2 bolt and 3 bolt flange slip joint and clamp connections. The precision CNC machined surface provides a gasketless seal. The T-Bolt style latch allows the clamp to be installed quickly without removing the nut

V - Band & Flange Part Numbers

Tube size / O.D. V - Band V - Band Kit Clamp

2"	CH-VBC2"	
2.25"	CH-VBC2.25"	
2.50"	CH-VBC2.5"	
3.00"	CH-VBC3"	2500
3.50"	CH-VBC3.:	2503
4.00 "	CH-VBC4"	2504
5.00"	CH-VBC5"	2506

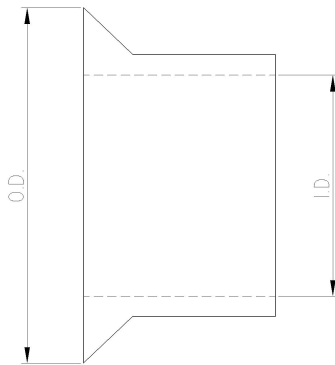
Kit includes: 1 x clamp
2 x sealing flanges

NOTE; FOR STAINLESS STEEL ADD "S" TO THE END OF THE PART NO

Specifications

V-Bands are designed for use with CAE Flanges. The advertised sizes refer to the outside diameter of the tube that will slide through the inside diameter of the sealing flange.

Our V-Band clamps and sealing flanges are not designed specifically to be compatible with other manufactures flanges, such as turbine outlets.



Part No.	I.D.	O.D.
CH-VBC2"	2.00"	2.69"
CH-VBC2.:	2.25"	2.99"
CH-VBC2.:	2.50"	3.22"
CH-VBC3"	3.00"	3.69"
CH-VBC3.:	3.50"	4.22"
CH-VBC4"	4.00"	4.69"
CH-VBC5"	5.00"	5.59"

* Denotes item is Mandrel Bent



Mandrel Bends

Castle Headers offer Precision Mandrel Bends in Mild Steel and 304, 316, 409 in StainlessSteel. Radius = 1.5 x Diameter,

Tube Diameter		Deg Bend	Part No	Deg Bend	Part No	Deg Bend	Part No
Inches	MM	45Deg	CH-Bend	90Deg	CH-Bend	180Deg	CH-Bend
1-1/2"	38	"	00B	"	00A	"	00
1-5/8"	41	"	03C	"	03B	"	03A
1-3/4"	44	"	01C	"	01B	"	01A
1-7/8"	48	"	04C	"	04B	"	04A
2"	51	"	02C	"	02B	"	02A
2-1/8"	54	"	05C	"	05B	"	05A
2-1/4"	57	"	2054	"	2004	"	2144
2-3/8"	60.3	"	06C	"	06B	"	06A
2-1/2"	63.5	"	2055	"	2005	"	2145
2-3/4"	69.8	"	07C	"	07B	"	07A
3"	76	"	2056	"	2006	"	2146
3.5"	89	"	2057	"	2007	"	2147

Please Note - For Stainless Steel Pt No add SS. I.E. CH- Bend 03CSS

* Denotes item is Mandrel Bent



Transmission Cross Members

Part No.	Description
----------	-------------

CHEVROLET

XM5567TH700	Chevrolet 1955-56-57 with T-700 Auto Transmission
XM5567TH400	Chevrolet 1955-56-57 with T-400 Auto Transmission
XM5567TH350	Chevrolet 1955-56-57 with T-350 Auto Transmission
XM5567T56	Chevrolet 1955-56-57 with T56 Tremec Manual Transmission

HOLDEN - HK-HT-HG

XMHTGTH700	Holden HT-HG with T-700 Auto Transmission
XMHTGTH400	Holden HT-HG with T-400 Auto Transmission
XMHTGTH350	Holden HT-HG with T-350 Auto Transmission
XMHTGT56	Holden HT-HG with T56 Tremec Manual Transmission
XMHTLS14L60E	Holden HT-HG with 4L60E Tremec Manual Transmission
XMHKTH700	Holden HK with T-700 Auto Transmission
XMHKTH400	Holden HK with T-400 Auto Transmission
XMHKTH350	Holden HK with T-350 Auto Transmission

HOLDEN - HQ-HJ-HX-HZ-WB

XMHQUTETH700	HQ-HJ-HX-HZ-WB Ute -1 Tonner & Van with T-700 Auto Transmission
XMHQUTETH400	HQ-HJ-HX-HZ-WB Ute -1 Tonner & Van with T-400 Auto Transmission
XMHQUTETH350	HQ-HJ-HX-HZ-WB Ute -1 Tonner & Van with T-350 Auto or Muncie, Saginaw and Super T10 Ma
XMHQUTE4L60E	HQ-HJ-HX-HZ-WB Ute -1 Tonner & Van with 4L60E Auto Transmission
XMHQUTET56	HQ-HJ-HX-HZ-WB Ute -1 Tonner & Van with T56 Tremec Manual Transmission
XMHQSEDTH700	HQ-HJ-HX-HZ-WB Sedan with T-700 Auto Transmission or T5 Transmission
XMHQSEDTH400	HQ-HJ-HX-HZ-WB Sedan with T-400 Auto Transmission
XMHQSEDTH350	HQ-HJ-HX-HZ-WB Sedan with T-350 Auto Transmission
XMHQSEDT56	HQ-HJ-HX-HZ-WB Sedan with T56 Tremec Manual Transmission
XMHQSED4L60E	HQ-HJ-HX-HZ-WB Sedan with 4L60E Auto Transmission

FORD

XM/FORD XT-XR-XW-X Suit Ford Falcon Extensions for Longer late model transmissions

* Denotes item is Mandrel Bent



Transmission Cross Members

continued

Part No.	Description
----------	-------------

COMMODORE

XMVBK308T5+T700	Holden VB-VK Commodore suit 253-308 fitted with T5 manual and - 4L60E Auto Transmission use A1158 Trans rubber mount.
XMVBK308TH350	Holden VB-VK Commodore 5Lt with T-350 Auto Transmission
XMVBK308TH400	Holden VB-VK Commodore 5Lt with T-400 Auto Transmission
XMVBK308T56	Holden VB-VK Commodore 5Lt with T56 Tremec Manual Transmission
XMVB-VKT56	Holden VB-VK Commodore GEN III conversion with T56 Tremec Manual Transmission
XMVB-VK4L60E	Holden VB-VK Commodore GEN III conversion with 4L60E and 4L65E Auto Transmission
XMVB-VKTH400	Holden VB-VK Commodore GEN III conversion with Turbo 400 Auto Transmission
XMVL-VRT56	Holden VL-VR Commodore GEN III conversion with T56 Tremec Manual Transmission
XMVL-VR4L60E	Holden VL-VR Commodore GEN III conversion with 4L60E and 4L65E Auto Transmission
XMVL-VRT400	Holden VL-VR Commodore GEN III conversion with Turbo 400 Auto Transmission
XMVL-VRT350	Holden VL-VR Commodore GEN III conversion with Turbo 350 Auto Transmission
XMVLT700	Holden VL Commodore with T-700 Auto Transmission
XMVLT56	Holden VL Commodore with T56 Tremec Manual Transmission
XMVSL1T56	Holden VS Commodore with GEN III engine and T56 or 4L60E Trans.
XMVTVZT350	Holden VT-VZ Commodore with GEN III engine and T350 Auto. Trans.
XMVTVZT400	Holden VT-VZ Commodore with GEN III engine and T400 Auto. Trans.

TORANA

XMLH700 & T5	Holden LH Torana with T-700 Auto or T5 Transmission
XMLH400 & 4L60E	Holden LH Torana with T-400 Auto or 4L60E Transmission
XMLH350	Holden LH Torana with T-350 Auto Transmission
XMLCLS1T56	Holden LC-LJ Torana with T56 Transmission
XMLCJTH700	Holden LC-LJ Torana with T-700 Auto Transmission
XMLCJTH400	Holden LC-LJ Torana with T-400 Auto Transmission
XMLCJTH350	Holden LC-LJ Torana with T-350 Auto Transmission

NISSAN

XM-NISSAN 300XZ	Nissan 300 ZX-Z31-Z32 LS1-2-3 with T350 Auto Conversion rear cross member
-----------------	---

* Denotes item is Mandrel Bent



ENGINE CONVERSION KITS

FORD

STRUTKIT-01	FORD FALCON XR-XT-XW-XY Strut strengthening kit
CH-EM08	FORD FALCON XK-XL-XP-XM V8 Windsor Conversion Kit.
CH-EM07	FORD FALCON XR-XT-XW-XY Kit to suit Ford BA-BF-FG 6cyl Barra and Turbo Engines.
CH-EM09	FALCON XA to XF to suit BA-BF-FG 6cyl Engine conversion
CH-EM17	FORD CORTINA TC-TD FORD WINDSOR V8 Conversion Kit.
CH-EM19	FORD WINDSOR and CLEVELAND into XR-XT-XW-XY FALCONS.
X/M-FORD-XL-XM-XP	FORD FALCON XK-XL-XM-XP Conversion Trans Cross member suit C4 Auto and Top Loader
